

Average Wholesale Propane Prices in Nebraska

[Analysis](#) | [Heating Season](#) | [Off Season](#) | [Midwest Region](#)
[Graph](#) | [Prices](#) | [Price Archive](#) | [Residential Prices](#)
[Annual Report](#) | [Annual Report Archive](#)
[Midseason Report](#)

Analysis

The average wholesale [propane](#) price on November 12, 2007, had relatively no change from the previous week at \$1.62 per gallon (see the [table](#) at the end of this report). The [graph](#) below shows the spread in Nebraska prices from month to month and from this year compared to previous years. This week's average price was 60 cents (or 59 percent) higher than the price at this time last year.

Other [states](#) in the Midwest Region had comparable wholesale prices ranging from \$1.58 to \$1.69 per gallon with the region averaging \$1.63. States adjacent to Nebraska, such as Kansas, South Dakota, Iowa, and Missouri, had prices of \$1.59, \$1.64, \$1.63, and \$1.62, respectively.

With 23.1 million barrels on November 9, the Midwest Region inventory level was in the normal range for this time of year.

Notes: The [annual report](#) for the 2006-2007 winter season is available. An [archive](#) houses annual reports from previous years.

Heating Season

The Oil Price Information Service collects wholesale [propane](#) prices each week for Nebraska and eleven (11) other states in the Midwest Region during the heating season (October to March). The [Energy Information Administration](#), the independent statistical and analytical agency within the U.S. Department of Energy, uses the prices collected by the Oil Price Information Service to calculate a state average price, a regional average price, and a national average price which can be seen in the report [Wholesale Propane Prices by Region and State](#).

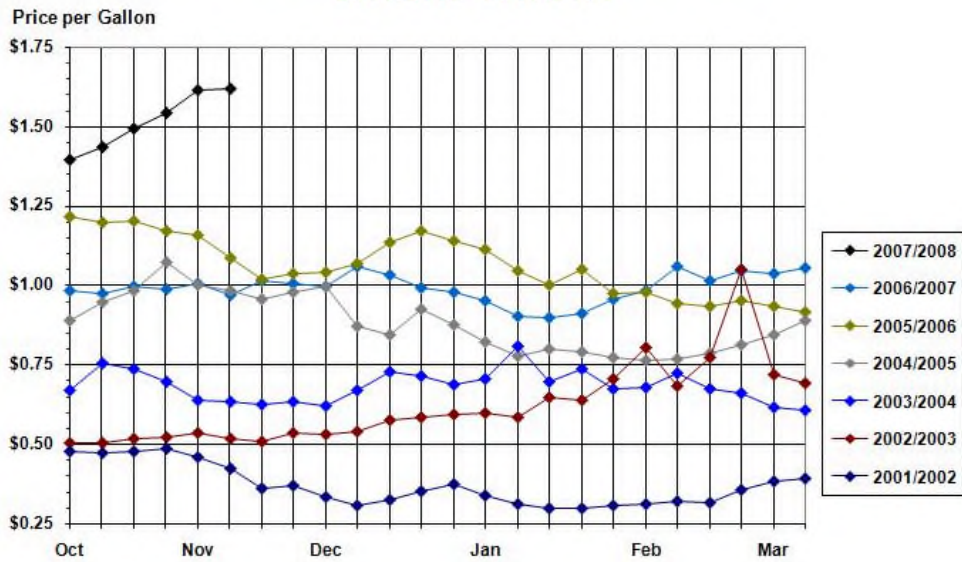
Off Season

Prices are not collected during the off season (April through September).

Midwest Region

For statistical purposes, the Energy Information Administration defines the [Midwest Region](#) to include the states of Iowa, Illinois, Indiana, Kansas, Kentucky, Michigan, Minnesota, Missouri, Nebraska, North Dakota, Ohio, Oklahoma, South Dakota, Tennessee, and Wisconsin.

Nebraska's Average Wholesale Propane Prices 2001/2002 - 2007/2008



[Return to top of page](#)

Nebraska's Average Wholesale Propane Prices 2001/2002 — 2007/2008

	Heating Season					
	Oct	Nov	Dec	Jan	Feb	Mar
2001/2002						
First Monday	\$0.478	\$0.457	\$0.335	\$0.336	\$0.304	\$0.353
Second Monday	\$0.471	\$0.423	\$0.307	\$0.311	\$0.310	\$0.383
Third Monday	\$0.478	\$0.361	\$0.326	\$0.297	\$0.320	\$0.392
Fourth Monday	\$0.484	\$0.369	\$0.349	\$0.296	\$0.317	
Fifth Monday	\$0.482		\$0.375			
2002/2003						
First Monday	\$0.501	\$0.535	\$0.531	\$0.596	\$0.706	\$1.051
Second Monday	\$0.502	\$0.515	\$0.537	\$0.582	\$0.803	\$0.716
Third Monday	\$0.515	\$0.507	\$0.573	\$0.646	\$0.684	\$0.693
Fourth Monday	\$0.523	\$0.534	\$0.584	\$0.637	\$0.773	
Fifth Monday			\$0.591			
2003/2004						
First Monday	\$0.667	\$0.636	\$0.621	\$0.703	\$0.675	\$0.661
Second Monday	\$0.752	\$0.634	\$0.667	\$0.809	\$0.678	\$0.615
Third Monday	\$0.737	\$0.625	\$0.727	\$0.694	\$0.723	\$0.605
Fourth Monday	\$0.696	\$0.632	\$0.715	\$0.734	\$0.672	
Fifth Monday			\$0.688			
	Heating Season					
	Oct	Nov	Dec	Jan	Feb	Mar
2004/2005						
First Monday	\$0.890	\$0.999	\$0.868	\$0.820	\$0.763	\$0.844
Second Monday	\$0.948	\$0.980	\$0.842	\$0.775	\$0.768	\$0.889
Third Monday	\$0.984	\$0.953	\$0.925	\$0.800	\$0.784	
Fourth Monday	\$1.072	\$0.977	\$0.875	\$0.788	\$0.810	

	Heating Season					
	Oct	Nov	Dec	Jan	Feb	Mar
Fifth Monday		\$0.996		\$0.771		
2005/2006						
First Monday	\$1.217	\$1.087	\$1.066	\$1.110	\$0.976	\$0.934
Second Monday	\$1.195	\$1.020	\$1.135	\$1.044	\$0.941	\$0.916
Third Monday	\$1.200	\$1.037	\$1.170	\$0.998	\$0.931	
Fourth Monday	\$1.171	\$1.042	\$1.138	\$1.048	\$0.950	
Fifth Monday	\$1.156			\$0.972		
2006/2007						
First Monday	\$0.981	\$0.969	\$1.059	\$0.949	\$0.980	\$1.037
Second Monday	\$0.972	\$1.015	\$1.032	\$0.901	\$1.056	\$1.052
Third Monday	\$0.996	\$1.003	\$0.989	\$0.897	\$1.014	
Fourth Monday	\$0.986	\$0.994	\$0.978	\$0.910	\$1.044	
Fifth Monday	\$1.005			\$0.954		
	Heating Season					
	Oct	Nov	Dec	Jan	Feb	Mar
2007/2008						
First Monday		\$1.612	NA	NA	NA	NA
Second Monday	\$1.394	\$1.616	NA	NA	NA	NA
Third Monday	\$1.436	NA	NA	NA	NA	NA
Fourth Monday	\$1.494	NA	NA	NA	NA	
Fifth Monday	\$1.543		NA			

[Return to top of page](#)

Sources: *Weekly Petroleum Status Report*. Energy Information Administration, Washington, DC. Nebraska Energy Office, Lincoln, NE.

Note: NA = Not Available.

This report was updated on November 16, 2007.

Typically, there is one week between updates during the heating season.

[Energy Statistics Home](#) | [Contact Us](#) | [Archive](#) | [Conversion Chart](#) | [Energy Glossary](#) | [Energy Office Home](#)
[State of Nebraska Privacy & Security Policies](#) | [State of Nebraska Home](#)