

Average Wholesale Propane Prices in Nebraska

[Analysis](#) | [Heating Season](#) | [Off Season](#) | [Midwest Region](#)
[Graph](#) | [Prices](#) | [Annual Report](#) | [Residential Prices](#)

Analysis

The average wholesale [propane](#) price on March 14, 2005, increased 5 cents from last week to 89 cents per gallon (see the [table](#) at the end of this report). The [graph](#) below shows the spread in Nebraska prices from month to month and from this year compared to previous years. The price was 27 cents (45 percent) higher than the price was at this time last year. Other [states](#) in the Midwest region had comparable wholesale prices ranging from 85 to 95 cents per gallon with the region averaging 91 cents. States adjacent to Nebraska, such as Kansas, South Dakota, Iowa, and Missouri, had prices of 89, 90, 90, and 89 cents, respectively. With 9 million barrels, the Midwest region [inventory](#) level was in the normal range for this time of year.

This is the last week of the traditional heating season. Wholesale prices will not be reported during the off season or build season. The build season is the period from April to September when heating fuel demand is usually less which allows stocks to build.

Notes: The annual report for the 2004-2005 winter season will be available in June. The [archive](#) houses annual reports from previous years.

Heating Season

The Oil Price Information Service collects wholesale [propane](#) prices each week for Nebraska and eleven (11) other states in the Midwest Region during the heating season (October to March). The [Energy Information Administration](#), the independent statistical and analytical agency within the U.S. Department of Energy, uses the prices collected by the Oil Price Information Service to calculate a state average price, a regional average price, and a national average price which can be seen in the report [Wholesale Propane Prices by Region and State](#).

Off Season

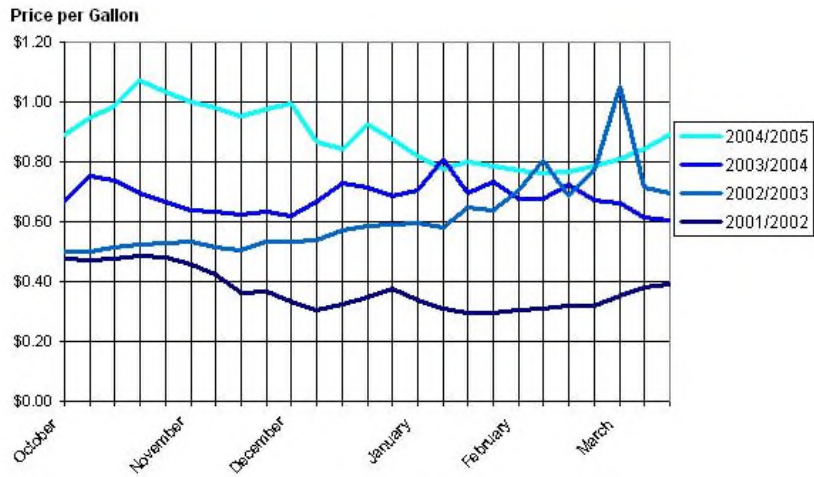
Prices are not collected during the off season (April through September).

Midwest Region

For statistical purposes, the Energy Information Administration defines the [Midwest region](#) to include the states of Iowa, Illinois, Indiana, Kansas, Kentucky, Michigan, Minnesota, Missouri, Nebraska, North Dakota, Ohio, Oklahoma, South Dakota, Tennessee, and Wisconsin.

[Return to top of page](#)

Nebraska's Average Wholesale Propane Prices
2001/2002 — 2004/2005



[Return to top of page](#)

Nebraska's Average Wholesale Propane Prices 2001/2002 — 2004/2005

	Heating Season					
	Oct	Nov	Dec	Jan	Feb	Mar
2001/2002						
First Monday	\$0.478	\$0.457	\$0.335	\$0.336	\$0.304	\$0.353
Second Monday	\$0.471	\$0.423	\$0.307	\$0.311	\$0.310	\$0.383
Third Monday	\$0.478	\$0.361	\$0.326	\$0.297	\$0.320	\$0.392
Fourth Monday	\$0.484	\$0.369	\$0.349	\$0.296	\$0.317	
Fifth Monday	\$0.482		\$0.375			
2002/2003						
First Monday	\$0.501	\$0.535	\$0.531	\$0.596	\$0.706	\$1.051
Second Monday	\$0.502	\$0.515	\$0.537	\$0.582	\$0.803	\$0.716
Third Monday	\$0.515	\$0.507	\$0.573	\$0.646	\$0.684	\$0.693
Fourth Monday	\$0.523	\$0.534	\$0.584	\$0.637	\$0.773	
Fifth Monday			\$0.591			
2003/2004						
First Monday	\$0.667	\$0.636	\$0.621	\$0.703	\$0.675	\$0.661
Second Monday	\$0.752	\$0.634	\$0.667	\$0.809	\$0.678	\$0.615
Third Monday	\$0.737	\$0.625	\$0.727	\$0.694	\$0.723	\$0.605
Fourth Monday	\$0.696	\$0.632	\$0.715	\$0.734	\$0.672	
Fifth Monday			\$0.688			
	Heating Season					
	Oct	Nov	Dec	Jan	Feb	Mar
2004/2005						
First Monday	\$0.890	\$0.999	\$0.868	\$0.820	\$0.763	\$0.844
Second Monday	\$0.948	\$0.980	\$0.842	\$0.775	\$0.768	\$0.889
Third Monday	\$0.984	\$0.953	\$0.925	\$0.800	\$0.784	
Fourth Monday	\$1.072	\$0.977	\$0.875	\$0.788	\$0.810	
Fifth Monday		\$0.996		\$0.771		

[Return to top of page](#)

Note: NA = Not Available.

*This report was updated on March 17, 2005.
Typically, there is one week between updates during the heating season.*

[Energy Statistics Home](#) | [Contact Us](#) | [Archive](#) | [Conversion Chart](#) | [Energy Glossary](#) | [Energy Office Home](#)
[State of Nebraska Privacy & Security Policies](#) | [State of Nebraska Home](#)