

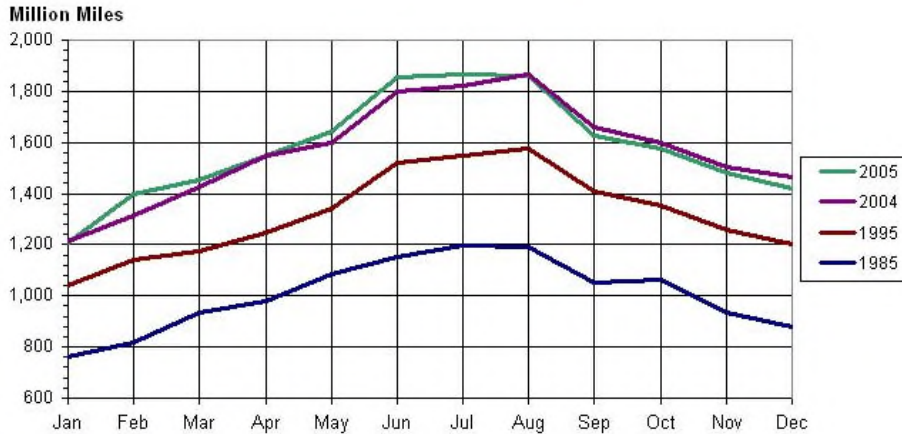
# Motor Vehicle Miles Traveled in Nebraska

The graph shows monthly travel in 2005, the previous year, ten years prior, and twenty years prior. Using the table beneath the graph, total travel in 2005 increased 1.7 percent from 2004, 19.8 percent from ten years prior (1995), and 57.1 percent from twenty years prior (1985). Travel increased 31.2 percent from 1985 to 1995.

Note: An [archive](#) is available.

## Motor Vehicle Miles Traveled in Nebraska

### 1985, 1995, 2004, and 2005



### Motor Vehicle Miles Traveled in Nebraska 1979-2005 (Million Miles)

Year	Jan	Feb	Mar	Apr	May	Jun	Jul	Aug	Sep	Oct	Nov	Dec	Annual Total
1979	688	794	897	981	1,036	1,091	1,117	1,133	1,041	1,001	881	869	11,529
1980	729	741	807	899	989	1,065	1,120	1,126	1,006	982	921	837	11,222
1981	775	770	865	949	1,022	1,101	1,136	1,143	1,030	987	902	832	11,512
1982	677	783	851	934	1,008	1,101	1,153	1,138	1,038	1,001	918	834	11,436
1983	754	768	843	929	1,035	1,129	1,181	1,162	1,066	1,018	885	764	11,534
1984	778	811	857	946	1,071	1,158	1,190	1,186	1,077	1,032	975	853	11,934
1985	763	816	932	982	1,085	1,154	1,199	1,194	1,052	1,062	936	879	12,054
1986	839	834	971	1,001	1,109	1,187	1,239	1,248	1,117	1,095	1,019	971	12,630
1987	868	916	908	1,082	1,151	1,228	1,295	1,276	1,173	1,145	1,055	994	13,091
1988	850	925	1,005	1,097	1,167	1,258	1,314	1,293	1,186	1,165	1,068	1,043	13,371
1989	939	919	1,021	1,147	1,211	1,295	1,320	1,341	1,231	1,206	1,126	1,025	13,781
1990	941	980	1,045	1,154	1,236	1,328	1,363	1,377	1,219	1,199	1,105	1,010	13,957
1991	913	1,012	1,061	1,145	1,244	1,354	1,390	1,397	1,254	1,202	1,040	1,083	14,095
1992	974	1,044	1,097	1,174	1,272	1,372	1,433	1,426	1,291	1,270	1,139	1,082	14,574
1993	939	985	1,106	1,207	1,286	1,411	1,444	1,474	1,318	1,291	1,172	1,144	14,777
1994	984	1,064	1,204	1,243	1,341	1,457	1,521	1,527	1,372	1,340	1,240	1,171	15,464

Year	Jan	Feb	Mar	Apr	May	Jun	Jul	Aug	Sep	Oct	Nov	Dec	Annual Total
<b>1995</b>	1,041	1,139	1,172	1,245	1,341	1,519	1,549	1,578	1,411	1,351	1,259	1,204	15,809
<b>1996</b>	1,027	1,185	1,212	1,296	1,380	1,557	1,571	1,612	1,425	1,403	1,286	1,240	16,194
<b>1997</b>	1,085	1,201	1,296	1,303	1,448	1,621	1,633	1,681	1,467	1,413	1,363	1,280	16,791
<b>1998</b>	1,116	1,259	1,212	1,395	1,497	1,646	1,679	1,714	1,517	1,468	1,386	1,330	17,219
<b>1999</b>	1,130	1,259	1,316	1,404	1,502	1,690	1,702	1,753	1,537	1,497	1,433	1,347	17,570
<b>2000</b>	1,191	1,297	1,375	1,435	1,527	1,703	1,710	1,769	1,564	1,487	1,391	1,274	17,723
<b>2001</b>	1,154	1,211	1,361	1,456	1,521	1,722	1,744	1,804	1,585	1,539	1,460	1,383	17,940
<b>2002</b>	1,220	1,338	1,352	1,482	1,583	1,783	1,782	1,827	1,611	1,533	1,469	1,424	18,404
<b>2003</b>	1,227	1,313	1,382	1,484	1,592	1,803	1,812	1,853	1,633	1,597	1,480	1,416	18,592
<b>2004</b>	1,204	1,299	1,413	1,535	1,583	1,784	1,803	1,848	1,643	1,581	1,489	1,448	18,630
<b>2005</b>	1,210	1,398	1,456	1,546	1,643	1,854	1,867	1,859	1,625	1,577	1,481	1,422	18,938

**Sources:** "State of Nebraska Automatic Traffic Recorder Data."  
Nebraska Department of Roads, Office of Planning and  
Administration, Transportation Planning Division, Lincoln, NE.  
Nebraska Energy Office, Lincoln, NE.

**Notes:** Travel was affected by winter weather in the following  
months: January of 1996, 2001, 2004, and 2005; February of  
1994, 2001, 2003, and 2004; March of 1995, 1998, and 2002;  
October of 1997; November of 2000, 2003, 2004, and 2005; and  
December of 2000, 2003, and 2005. NA = Not Available.  
Numbers in red are new or revised.

*The table and graph were completed on February 16, 2006.*

[Energy Statistics Home](#) | [Contact Us](#) | [Archive](#) | [Conversion Chart](#) | [Energy Glossary](#) | [Energy Office Home](#)  
[State of Nebraska Privacy & Security Policies](#) | [State of Nebraska Home](#)