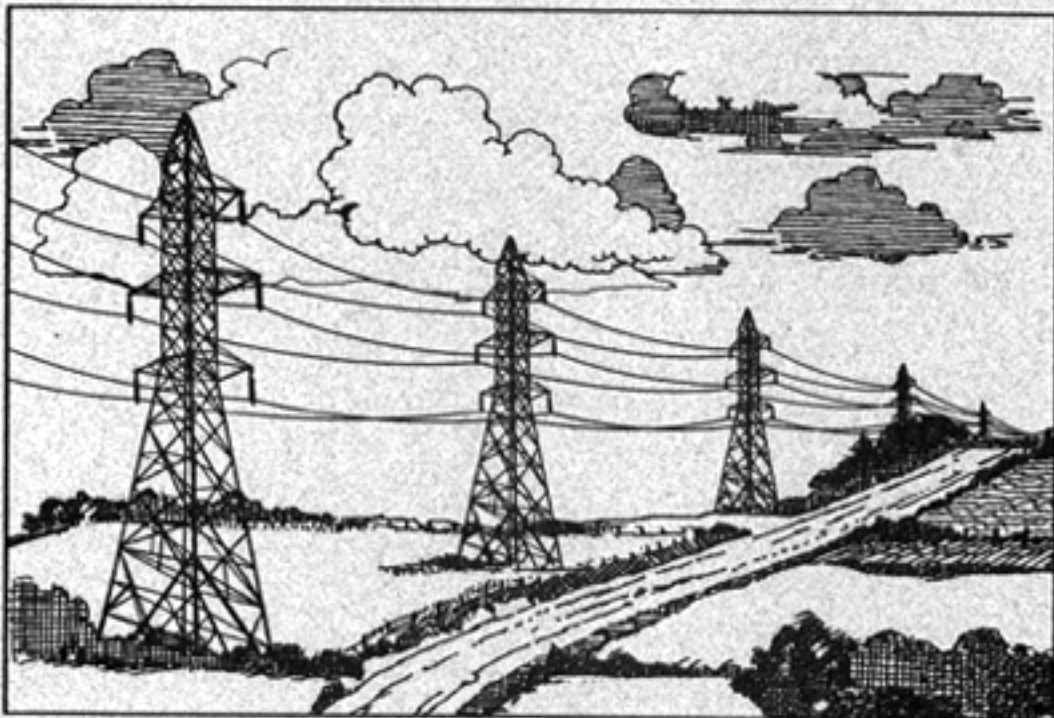


**FOURTEENTH BIENNIAL REPORT
OF
THE NEBRASKA POWER REVIEW BOARD**



**to the
Governor of Nebraska
July 1, 2004 through June 30, 2006**

INTRODUCTION

The Nebraska Power Review Board is pleased to present its Biennial Report covering the period of July 1, 2004 through June 30, 2006. The report is prepared in compliance with the requirements set out in Neb. Rev. Stat. § 70-1003(4). The report contains information on the Board's budget and activities during the two-year period, and provides a brief description for each application upon which the Board took action. These include applications for generation facilities, most transmission facilities located outside a power supplier's service area, amendments to retail service area agreements, and amendments to public power district charters.

**FOURTEENTH BIENNIAL REPORT
OF
THE NEBRASKA POWER REVIEW BOARD**

Table of Contents

I.	Board Members and Staff.....	1
II.	Expenditure Reports.....	2
III.	Statistical Summary	3
IV.	Generation Facilities	5
V.	Microwave Communications Facilities	13
VI.	Transmission Line Applications Requiring Board Approval	17
VII.	Retail Service Area Agreement Amendments	23
VIII.	Wholesale Service Area Agreement Amendments	31
IX.	Amendments to Public Power District Charters.....	35
X.	Complaints.....	41
XI.	Roster of Power Suppliers Operating in Nebraska.....	45
	A. Wholesale Power Suppliers.....	47
	B. Generation and Transmission Associations	47
	C. Public Power Districts and Cooperatives	47
	D. Municipal Power Suppliers	50
	E. Power Suppliers by Category.....	56
XII.	Nebraska Power Association (NPA) Load and Capability Report	57
	A. Introductory Letter	59
	B. Statewide Capability vs. Obligation Chart.....	63
	C. Committed Load & Generating Capability in Megawatts.....	64
	D. Committed, Planned & Studied Load & Generating Capacity in Megawatts.....	66
	E. Committed, Planned and Studied Capability Data	68
	F. Existing Generating Capability Data	69

CURRENT BOARD MEMBERS

Chair ----- Gene Bade, Hastings
Term expires January 1, 2010

Vice Chair----- Ken Kunze, York
Term expires January 1, 2009

Member----- Don Kohtz, Omaha
Term expires January 1, 2009

Member----- Mark Hunzeker, Lincoln
Term Expires January 1, 2007

Member----- Michael Siedschlag, Omaha
Term expires January 1, 2010

STAFF

Executive Director
and General Counsel ----- Timothy J. Texel

Business Manager----- Carol Behne

Paralegal----- Sara Hayek

EXPENDITURE REPORTS

	<u>2004-2005</u>	<u>2005-2006</u>
PERSONAL SERVICES		
Salaries, wages, and per diems	133,579.60	128,556.68
TOTAL	133,579.60	128,556.68
 OPERATING EXPENSES		
Postage	2,070.32	1,159.96
Communications	1,868.41	2,179.72
Data Processing Expense	809.00	90.00
Publications & Printing	3,762.52	3,465.27
Awards	63.05	97.60
Dues and Subscriptions	2,904.40	3,032.20
Conference Registrations	3,050.00	4,095.00
Rent Expense - Building	7,082.64	7,082.64
Depreciation Surcharge	2,437.40	2,437.40
Repair and Maintenance - Building	0.00	0.00
Repair and Maintenance - Office Equipment	0.00	0.00
Repair and Maintenance - Data Processing	40.00	0.00
Office Supplies	1,118.10	1,041.80
Misc. Supply Exp.	31.00	44.00
Non-Capitalized Equipment	1,271.70	1,294.99
Food Expense	51.58	0.00
Legal Related Expenses	1,090.95	(202.60)
Accounting and Auditing		
Services	1,959.00	2,104.02
Surety and Notary Bonds	26.85	13.12
SOS Temp Service -		
Personnel	4,847.72	1,097.77
Other Contractual Services	26,400.00	22,236.40
Software - New Purchase	80.07	104.17
Temp. Service - Outside	0.00	103.68
Other Operating Expenses	0.00	0.00
TOTAL	60,964.71	51,477.14
 TRAVEL EXPENSE		
Board and Lodging	5,662.21	3,639.85
Meals - One Day Travel	17.58	3.74
Commercial Transportation	2,479.35	2,206.77
State-Owned Transportation	154.98	79.92
Personal Vehicle Mileage	4,007.66	2,087.23
Miscellaneous Travel	397.33	237.75
TOTAL	12,719.11	8,255.26
 GRAND TOTAL	 207,263.42	 188,289.08

STATISTICAL SUMMARY OF BOARD ACTIVITIES

July 1, 2004, to June 30, 2006

	<u>2004-2005</u>	<u>2005-2006</u>	
Number of Regular Board Meetings -----	12	10	
Hearings Before the Power Review Board:			
Complaints-----	0	0	
Hearings-----	6	0	
Construction Applications:			
Approved New Generation Facilities ¹ -----	5	0	
Microwave Communications Facilities ² -----	1	0	
Transmission Lines Over 2 Mile Outside Applicant's Service Area ³ -----	4	6	TOTAL
Approved Generation & Transmission Applications to Date -----	1,514	1,520	
Generation & Transmission Applications Denied In Current Biennial Period-----	0	0	
TOTAL Denied Applications to Date-----	26	26	
Transmission Lines 2 Mile or Less Outside a			
Power Supplier's Service Area ⁴ -----	21	32	
TOTAL Lines Approved to Date -----	1822	1852	
Applications Withdrawn or Dismissed to Date -----	74	74	
Amendments to Service Area Agreements and Public Power District Charters:			
Retail Service Area Modifications-----	6	10	
TOTAL Retail Service Area Agreement Amendments -----	425	435	
Wholesale Service Area Agreement Modifications -----	0	0	
TOTAL Wholesale Service Area Agreement Amendments -----	21	21	
Petitions to Amend Public Power District Charters ⁵ -----	5	4	

¹ During the July 1, 2004 through June 30, 2006, biennial period the Board approved five applications for generation facilities for an estimated total cost of \$1,341,227,048.

² During the July 1, 2004 through June 30, 2006, biennial period the Board approved one application for a microwave facility for an estimated cost of \$245,000.

³ During the July 1, 2004 through June 30, 2006, biennial period the Board approved ten formal applications for transmission lines for an estimated total cost of \$53,139,122.

⁴ Applications for construction of transmission lines one-half mile or less outside a power supplier's service area do not require formal approval by the Board if owners of electric lines within one-half mile of the proposed extension consent to the project. An application must still be filed with the Board to satisfy notice requirements pursuant to Title 285, Nebraska Administrative Code, Chapter 2, section 3. During the July 1, 2004 through June 30, 2006, biennial period the Board received 53 applications that did not require a formal vote, for a total estimated cost of \$736,234.

⁵ Public power district charters are also commonly referred to as "petitions for creation." Once a district's petition for creation is approved, it becomes the district's charter. See Custer Public Power District v. Loup River Public Power District, 162 Neb. 300, 75 N.W. 2d 619 (1956).

GENERATION FACILITIES

PRB-3427
David Tobias
of Pilger, Nebraska

On May 4, 2004, Mr. David Tobias of Pilger, Nebraska filed an application with the Power Review Board for authorization to construct or install an electric generation facility consisting of one 10 kilowatt wind turbine in Stanton County, Nebraska. The application stated that the total cost for the project was estimated to be \$40,000. Written notice of the application and hearing was provided to the Stanton County Public Power District, Nebraska Public Power District, and Mr. Tobias. Notice to the general public was published on May 19, 2004 in the *Stanton Register*, a newspaper of general circulation in the affected area. A hearing was convened on June 17, 2004. A written Consent and Waiver form from Stanton County Public Power District was entered into evidence along with the original application. There were no Petitions to Intervene, written Protests, or Complaints filed with the Board concerning this application. The Board reconvened its public meeting after the hearing and tabled the matter until its next public meeting. During the Board's July 16, 2004 public meeting, the Board approved application PRB-3427. A completion statement gave actual costs for completion at \$37,000 and the date for completion as December 6, 2004.

PRB-3430
Nebraska Public Power District

On June 1, 2004, NPPD filed an application to construct a 60 MW wind energy facility with the option of building up to a 75 MW facility if additional participation could be secured. The proposed facility was to be located in Brown County, Nebraska. Estimated costs for the facility were projected at \$81 million for a 60 MW or \$100 million for a 75 MW facility, with commercial operation beginning sometime in the fall of 2005. Written notice of the hearing was sent to Tri-State Generation & Transmission Association Inc., Municipal Energy Agency of Nebraska, Lincoln Electric System, Omaha Public Power District, and KBR Rural Public Power District. Notice to the general public was published on June 16, 2004 in the *Lincoln Journal Star* and the *Ainsworth Star-Journal*. On July 16, 2004, the Board held a hearing on PRB-3430. Consent and Waiver forms from all power suppliers to whom notice had been sent were placed into evidence. Lincoln Electric System added a statement on its Consent and Waiver form clarifying that it had not independently verified the economic feasibility of the project, but it did not oppose or object to the representations of economic feasibility made by the Applicant. Tri-State Generation and Transmission Association, Inc. consented to the application, but removed the paragraph in the standard form stipulating that the proposed project would serve the public convenience and necessity, and that the applicant can most economically and feasibly supply the electric service resulting from

the proposed project without unnecessary duplication of facilities or operations. The Board requested additional information from NPPD, so the Board continued the hearing until a later date so that NPPD could collect the information. The hearing reconvened on August 26, 2004. Following the hearing, the Board held its public meeting and considered PRB-3430. At that time the Board voted to approve

PRB-3430. The completion statement submitted in June 2006 stated the facility's final cost was \$78,690,000.

PRB-3433
Kluthe Methane 80 kW Generation Project
(dismissed)

On June 29, 2004, Danny W. Kluthe filed an application with the Board requesting authority to construct or install a sixty kilowatt electric generation facility to be located in Section 2, Township 20 North, Range 4 East in Colfax County, Nebraska. The proposed facility would use methane for fuel. The total estimated cost for the generation facility was \$91,000. The facility will be financed by the applicant and through grants. The applicant estimated the facility would begin operations in the fall of 2004. Written notice regarding the application and the hearing was sent to the Cuming County Public Power District, the Village of Emerson, the Fremont Department of Utilities, Municipal Energy Agency of Nebraska, Nebraska Public Power District, the City of Wahoo, and the City of Wisner. Public notice was published in the *West Point News* on Wednesday, July 14, 2004. The Board convened a hearing on August 26, 2004.

Prior to the hearing the Board requested an opinion from the Nebraska Attorney General's office asking whether the federal Public Utility Regulatory Policies Act of 1978 ("PURPA") applies to Nebraska's public power utilities and whether there was a preemption issue concerning the Board's jurisdiction over small renewable generation facilities that qualify under PURPA. Attorney General's opinion #04024 was issued on September 7, 2004. In the opinion, the Attorney General concluded that PURPA's provisions pre-empt Nebraska's law giving the Power Review Board the authority over applications for the construction or grid-connection of electrical generation facilities, at least to the extent those facilities meet the PURPA definition of qualifying cogeneration facilities or qualifying small power production facilities. The Attorney General noted that PURPA encourages the development of cogeneration facilities and small power production facilities which generate electricity through less traditional energy sources such as biomass waste, solar, wind, or hydropower. The development of small generating resources had been impeded by state and federal regulatory burdens and reluctance of traditional electric utilities to sell power to, and purchase power from, the nontraditional facilities. FERC was authorized by Congress to address these issues, which resulted in rules that encourage cogeneration and small power production. The Attorney General concluded that the Board's ability to deny an application that qualifies under PURPA could frustrate the Act's purpose.

On September 28, 2004, the Power Review Board approved Power Review Board Policy No. 12. This policy was implemented to comply with the legal conclusions in Nebraska Attorney General's Opinion No. 04024. The Policy describes the procedures by which the Board will confirm that renewable generation projects which are considered "qualifying facilities" under PURPA shall be exempt from the need to obtain Board approval prior to construction, or prior to interconnecting with the transmission grid in the case of an existing facility.

On October 1, 2004, Mr. Kluthe applied with the Federal Energy Regulatory Commission for self-certification of an 80kW generator fueled with methane from the anaerobic digestion of manure

from approximately 8,000 hogs. NPPD will provide the interconnection to the local distribution line owned by Cuming County Public Power district. NPPD will purchase the net output of the 80 kW generator. Mr. Kluthe submitted to the Board his completed FERC's self-certification docket information, establishing that the proposed generation facility is now registered with FERC as a "qualifying facility" under PURPA.

On December 3, 2004, the Board held a public meeting. During this meeting the Board voted to dismiss PRB-3433 based on lack of jurisdiction in accordance with the conclusions in Attorney General's Opinion #04024.

PRB-3440
Hastings Utilities,
Municipal Energy Agency of Nebraska,
Omaha Public Power District,
Nebraska Public Power District,
Grand Island Utilities,
Nebraska City Utilities,
Heartland Consumers Power District,
And
Consolidated Wyoming Municipalities
Electric Power System Joint Powers Board

On November 10, 2004, the Power Review Board received a joint application requesting authority to construct a 220 megawatt coal-fired electric generation facility in Adams County, near the City of Hastings, Nebraska. The location would be adjacent to the existing Whelan Energy Center Unit 1. The proposed facility is commonly referred to as "Whelan Energy Center Unit 2". The parties jointly filing the application were the Consolidated Wyoming Municipalities Electric Power System Joint Powers Board, (Headquartered in Torrington, Wyoming), Grand Island Utilities, Hastings Utilities, the Heartland Consumers Power District, (headquartered in Madison, South Dakota), the Municipal Energy Agency of Nebraska (MEAN), Nebraska City Utilities, the Nebraska Public Power District (NPPD), and the Omaha Public Power District (OPPD). The generation facility would use pulverized coal as its fuel source. The estimated cost for this facility was \$445,000,000. The facility is estimated to engage in commercial operation in May 2012.

Notice to the general public was published in the *Omaha World-Herald* on November 19, 2004 and the *Hastings Tribune* on November 22, 2004. Written notice of the application and the hearing was sent to each of the joint applicants and also the City of Blue Hill, Village of Campbell, Fremont Department of Utilities, Lincoln Electric System (LES), and the City of Red Cloud.

A Petition of Intervention was filed by a Hastings utility customer wishing to protest the approval of the application. The Petition of Intervention was withdrawn by the Petitioner during the public meeting prior to the subsequent formal hearing.

A formal hearing was held on December 3, 2004. Offered and accepted into evidence were the Consent and Waiver forms from LES and Fremont Department of Utilities consenting to the approval of PRB-3440 and waiving a hearing and any all notice in the matter. After reviewing all evidence submitted and discussing the proposed facility, the Board voted to approve application PRB-3440.

On February 15, 2006 a progress report on the Whelan Energy Center Unit 2 (WEC 2) was sent to the Board. This update showed that the WEC 2 project was fully subscribed. Five of the eight public entities joined the Public Power Generation Agency (PPGA). They were MEAN, Heartland Consumers

Power District, Hastings Utilities, Grand Island Utilities, and Nebraska City Utilities. Utilities not joining the PPGA were NPPD, OPPD, and the Consolidated Wyoming Municipalities Electric Power System Joint Powers Board. NPPD and OPPD opted not to participate in the construction phase of the project. The City of Torrington opted to become a long-term Service Schedule M participant in MEAN.

PRB-3355-A
Omaha Public Power District

On January 18, 2005 the Omaha Public Power District (OPPD) filed an application to amend PRB-3355. The new application would allow OPPD to increase the capacity of the Nebraska City 2 coal-fired generation unit from the previously authorized 600 megawatts to 663 megawatts. This amendment would result in a savings of nearly \$5.00 per megawatt hour. Public notice of the application, hearing and opportunity to intervene was published in the *Omaha World Herald* and the *Nebraska City New-Press* on Monday, January 24, 2005. Written notice of the application and hearing were sent to the Nemaha County Development Alliance, Lincoln Electric System (LES), Auburn Board of Public Works, the Municipal Energy Agency of Nebraska (MEAN), Nebraska Public Power District (NPPD), and Nebraska City Utilities. The Board received Consent and Waiver forms from each of the parties to whom written notice had been provided.

On February 4, 2005, the Board held a hearing on PRB-3355-A. At the hearing, OPPD offered evidence in support of application PRB-3355-A.

The Board voted to approve application PRB-3355-A, and the previously approved PRB-3355 was amended as necessary so that its provisions are in conformity with the approved amendments.

Special Generation

PRB-3457-SG Omaha Public Power District

On May 9, 2005, the Omaha Public Power District (OPPD) filed an application for authority to construct four nominal 800 kW internal combustion engine generators. The proposed generators would be located at the Douglas County Landfill. This is an expansion to the already existing Elk City Station located near 216th Street and Highway 36 in Douglas County.

The estimated cost of the project was \$4,048,000. OPPD provided funding for this project from its capital budget. Written notice of the application was sent to NPPD, LES, and MEAN. Consent and Waiver forms were submitted by the Nebraska Public Power District, the Lincoln Electric System, and the Municipal Energy Agency of Nebraska. Notice to the general public was published in the *Omaha World-Herald* on May 4, 2005. The notice included a statement that the Board had the authority to waive a hearing on the matter if no Petitions of Intervention were received. No Petitions to Intervene, Protests, or Objections were received by the Board concerning the application.

During its public meeting held May 20, 2005, the Power Review Board found that no Petitions of Intervention or Protests had been received and waived the hearing. The Board then determined that the application met the special generation requirements set out in Neb. Rev. Stat. § 70-1014.01 and approved application PRB-3457-SG. The completion statement submitted by OPPD stated that the actual cost of the project was \$4,497,500.

MICROWAVE COMMUNICATION FACILITIES
PRB-3438-M
Dawson County Public Power District-

On October 20, 2004 the Dawson County Public Power District filed an application for authority to construct microwave communication facilities to be located in Dawson, Buffalo, Lincoln, Gosper and Custer Counties, Nebraska. The application requested approval of 120 miles of microwave communications facilities, with seven microwave sections, using frequency band 960 MHz, with an initial channel loading of six. The purpose of the construction was to allow the Dawson County Public Power District to provide itself with internal data collection and communications capability. The project was solely for the use of Dawson County Public Power District. The estimated cost of construction was \$245,000. The estimated date of completion was February 1, 2005.

Notice of the application was sent via certified mail to all common carrier communication companies registered with the Nebraska Public Service Commission that operate in the listed counties. The Notice stated that the carriers had the opportunity to file written protests to the application. The following communication companies received written notice via certified mail: Consolidated Telephone Co. (Lincoln, Nebraska), Qwest Communications, (Denver, Colorado), Frontier Communications (Kearney, Nebraska), Citizen Telecommunications Company, (Burnsville, Minnesota) and Great Plains Communications (Blair, Nebraska). There were no Petitions to Intervene or Protests filed with the Board concerning the application. At its public meeting held December 3, 2004, the Board voted to approve application PRB-3438-M.

**TRANSMISSION LINE APPLICATIONS
REQUIRING BOARD APPROVAL**

PRB-3441
Custer Public Power District

On November 18, 2004, the Custer Public Power District filed an application requesting authority to construct two different lines, a 12.5 kV three-phase distribution line approximately 2.5 miles in length and a 7.2 kV single-phase line approximately .5 mile in length. The lines would extend into the service area of the Panhandle Rural Electric Membership Association (PREMA). The Board provided written notice of the application to PREMA.

A Consent and Waiver form was submitted by PREMA consenting to the construction, but with an exception. PREMA retained the option of providing service to the customers affected by its waiver at a later date, based on the following condition:

PREMA will pay Custer Public Power District the depreciated cost of equipment used by Custer and subsequently used by PREMA to serve the affected customers of this waiver. This waiver is for a line in Township 22, Range 34, Section 19: All that portion of the E 1/2 lying east of the east fence line located in said E 1/2, Section 20: All, Section 21: All, Except that portion lying east of the county road traversing the E1/2 of E1/2 of said section, Section 28: All, the section from the northwest corner of said section to the south boundary of said section, Section 32: N1/2 of NE 1/4 , Section 33: N 1/2 of N 1/2 and specific to this line.

On January 7, 2005 the Board approved the application during its public meeting, subject to the rights reserved by PREMA in its Consent and Waiver form.

PRB-3444
Lincoln Electric System

On December 21, 2004, Lincoln Electric System (LES), the municipal electric utility for the City of Lincoln, Nebraska filed an application for authorization to construct a 34.5 kV substation facility in Lancaster County, Nebraska, and .4 mile of 34.5 kV transmission line to be used during construction of the substation. The construction of the substation and line will be located outside of LES's service area. The .4 mile of temporary line will be located along an exiting LES 345 kV line that connects the LES Wagener bulk substation at 128th & Adams and the NPPD Mark Moore bulk substation at the Sheldon Generating Station near Hallam.

Notice of the filing of the application and the hearing date was provided to the general public by publication in the *Lincoln Journal Star* newspaper on December 27 and 29, 2004. There were no Petitions to Intervene, Protests, or Objections filed concerning the application. On January 7, 2005, the Board commenced the formal hearing. The Consent and Waiver form from Norris was offered and accepted into evidence consenting to the approval of PRB-3444 and waiving a hearing and any and all notice in the matter. During its January 7, 2005, public meeting, held after the hearing, the Board approved the application. The estimated total cost of the project was \$5,000,000. LES estimates construction of the substation to be completed in May 2008. Therefore, there is not a Completion Statement on file yet.

PRB-3445
Omaha Public Power District

On December 28, 2004, the Omaha Public Power District (OPPD) filed an application with the Board requesting authorization to construct approximately fifty miles of 345 kV transmission line in Otoe and Lancaster Counties, Nebraska. The proposed line would be built from the Nebraska City Power Plant to southeast Lincoln, Nebraska.

Notice of the filing of the application and the hearing date was provided to the general public by publication in the *Omaha World-Herald* newspaper on December 28, 2004, in the *Lincoln Journal Star* newspaper on December 27, 2004, and in the *Nebraska City News-Press* on December 28, 2004. Written notice was sent to the City of Hickman, the City of Nebraska City, the Norris Public Power District, the Village of Panama, the Lincoln Electric System, the City of Syracuse, and the Village of Douglas.

A hearing was convened January 7, 2005. There were no Petitions to Intervene, Protests, or Objections filed concerning the application. Consent and Waiver forms were offered and accepted into evidence at the hearing. The forms were submitted by the City of Hickman, the City of Nebraska City, the Norris Public Power District, the Village of Panama, the Lincoln Electric System, the City of Syracuse, and the Village of Douglas. These potentially interested power suppliers consented to the approval of PRB-3445 and waived a hearing and any and all notice in the matter. The Board voted to approve PRB-3445. The estimated total cost of the project was \$35,000,000. OPPD estimated construction of the transmission line would be completed during 2008. On July 24, 2006, OPPD sent a letter updating the progress of the line. They currently are working with the Nebraska Department of Roads to obtain more specific information so they can finalize the design of the power line. Thus, there currently is no completion statement on file.

PRB-3463
Nebraska Public Power District

On June 22, 2005, NPPD filed an application requesting approval to construct 7.1 miles of 69 kV transmission line in Madison County, Nebraska. An existing 34.5 kV line needed to be removed and relocated a short distance away to accommodate a State of Nebraska highway project. The new line will be constructed approximately 50 feet away from the original line and have the capability of transmitting up to 69 kV. The estimated cost of the project was \$1,342,450. The Nebraska Department of Roads will be paying \$781,900 of that expense. The Board approved application PRB-3463 at its public meeting held July 22, 2005.

PRB-3465
Loup River Public Power District

On September 6, 2005, the Loup River Public Power District filed an application for authorization to construct and/or rebuild a total of 3.2 miles of existing 34.5 kV, three-phase transmission line in Platte and Nance Counties, Nebraska. The project consists of reconductoring 3.2 miles of line. Of the total project, 1.7 miles of the line will be removed and replaced in a new location. The remaining line will be replaced in its existing location, at the same voltage. Thus, only the 1.7 miles of line that will be removed and replaced in a new location requires Board approval. The

Cornhusker Public Power District filed a Consent and Waiver Form. The estimated cost of construction was \$244,000, with an estimated completion date of June 15, 2006.

At its September 23, 2005, Board meeting the Board voted to approve application PRB-3465. The completion statement has not been submitted by the Loup River Public Power District as of the publication of this report.

PRB-3476
Loup River Public Power District

On January 12, 2006, the Loup River Public Power District filed an application for authorization to construct and/or rebuild a total of 4.09 miles of 34.5 kV, three-phase transmission line and 2.4 miles of 12.5 kV distribution line in Platte and Madison counties, Nebraska. The project consists of replacing the existing line. The line would be located inside the Elkhorn Rural Public Power District's and the Cornhusker Public Power District's service areas. The Elkhorn Rural Public Power District and the Cornhusker Public Power District each filed a Consent and Waiver form consenting to the construction of the line. There were no Petitions to Intervene, Protests or Objections filed with the Board concerning the application. The estimated cost of construction was \$464,106, with an estimated completion date of December 1, 2006. At its February 24, 2006, public meeting the Board voted to approve application PRB-3476. The Completion Statement will not be filed until after completion.

PRB-3483
Nebraska Public Power District

On March 1, 2006, the Nebraska Public Power District filed an application with the Board for authorization to construct 1.7 miles of 69 kilovolt (kV), three-phase transmission line and 1.75 miles of 7.2/12.5 kV distribution line in Perkins County, Nebraska. The transmission line will serve the Madrid Ethanol Plant. The distribution line will serve the villages of Elsie, and Madrid, and the Madrid Ethanol Plant. The distribution line will also provide backup for the three aforementioned loads and the Midwest Electric Cooperative Corporation. The lines will be located in the Midwest Electric Cooperative Corporation's service area. The Midwest Electric Cooperative Corporation filed a Consent and Waiver form. There were no Petitions to Intervene, Protests or Objections filed with the Board concerning the application. The estimated cost of construction is \$1,356,153. The Board approved this application at its March 17, 2006 meeting. There is no Completion Statement on file yet.

PRB-3484
Nebraska Public Power district

On March 3, 2006 the Nebraska Public Power District filed an application with the Board for authorization to construct a 115/69 kV substation south of the City of Ravenna, in Buffalo County, Nebraska. The substation will serve NPPD's retail and wholesale customers in the area.

Dawson Public Power District filed a Consent and Waiver form consenting to the approval of PRB-3484. There were no Petitions to Intervene, written protests, or complaints filed. The estimated cost of this project was \$2,800,000. During the Board's public meeting on March 17, 2006, the Board voted to approve application PRB-3484. There is no completion statement on file because the estimated completion date is May 31, 2007.

PRB-3496
Lincoln Electric System

On May 3, 2006, Lincoln Electric System filed an application requesting authorization to construct two portions of a 345/115 kV, three-phase transmission line project in Lancaster County, Nebraska. The transmission line will be approximately 20.9 miles in length. The majority of this line will be located within LES's service area. There are two locations where the lines will leave LES's service area and therefore require the approval of the Board. These two portions of the line will be located in Norris Public Power District's service area.

The Board received Consent and Waiver forms from Nebraska Public Power District, Norris Public Power District and Omaha Public Power District consenting to approval of said application and waiving a hearing. There were no Petitions to Intervene, Protests, or Objections filed with the Board concerning this application.

This Board approved application PRB-3496 at its public meeting held on May 19, 2006. The estimated cost of construction was \$42,000,000. There is no completion statement on file because the estimated completion date is December 31, 2008.

PRB-3498
Highline Electric Association

On May 5, 2006, the Highline Electric Association filed an application for authorization to construct 1.5 miles of 7.2/12.47 kV, distribution line in Chase County, Nebraska. The line would provide service to three irrigation wells located in section 29, Township 5 North, Range 40 West. The line would be located in the Southwest Public Power District's service area. The Southwest Public Power District filed a Consent and Waiver form. There were no Petitions to Intervene, Protests or Objections filed with the Board concerning the application. The estimated cost of construction was \$24,000. The estimated completion date is June 1, 2006. At its May 18, 2006, public meeting the Board voted to approve application PRB-3498. The actual date of completion was June 7, 2006, and the cost for the project was \$31,762.98.

**RETAIL SERVICE AREA AGREEMENT
AMENDMENT**

SAA 369-04-A (WITHDRAWN)
Central City, Nebraska
Southern Public Power District

The application for amendment to SAA 369 was filed on April 19, 2004. On June 14, 2004, the City of Central City, Nebraska and the Southern Public Power District filed a request to withdraw application SAA 369-04-A. This service area adjustment was located in the area of 5th Avenue east and 20th Street south in Central City and consisted of approximately 68.8 acres. The application would have transferred territory from Southern Public Power District to the City of Central City. During its June 17, 2004 public meeting the Board voted to approve the withdrawal of SAA 369-04-A.

SAA 310-04-B
SAA 57-04-B
(consolidated)
Nebraska Public Power District
Dawson Public Power District (Dawson)

On November 10, 2004, NPPD and Dawson PPD filed a joint application to amend and clarify their service area agreement. The application was designated “SAA 310-04-B and SAA 57-04-B (consolidated)”. S.A.A. 310 is the service area agreement between NPPD and Dawson PPD. S.A.A. 57 was originally the service area agreement between the Platte Valley Public Power District and the Dawson PPD. Platte Valley Public Power District later became part of NPPD. The City of Kearney, Nebraska annexed a tract of land in Buffalo County, Nebraska. NPPD operates the retail electric distribution facility owned by the City and as a result of this wanted to amend the existing retail service area agreements between NPPD and Dawson PPD. This application would amend the service area agreements to include the newly annexed tract of land into Service Area Agreement 310 and 57. The Board approved application SAA 310-04-B and SAA 57-04-B during its public meeting held December 3, 2004.

SAA 243-04-A
City of Lexington
Dawson Public Power District

On November 24, 2004, the City of Lexington and the Dawson PPD filed a joint application to modify their service area boundary. The application was designated “SAA 243-04-A”. The application reflects the enlargement of the City of Lexington’s service area due to an annexation of territory. The annexed tract of land was served by Dawson PPD. During the Board’s public meeting on January 7, 2005, application SAA 243-04-A was approved.

SAA 329-05-A
City of Hastings
Southern Public Power District

On December 30, 2004, Southern Public Power District and Hastings Utilities filed a joint application to modify retail Service Area Agreement 329. The application was designated “SAA 329-05-A”. In this application Southern agreed to the transfer of property described as the east three-hundred feet of the south three-hundred feet of Section 23, Township 8 North, Range 10 West; the east three-hundred feet of Section 26, Township 8 North, Range 10 West, including Frink Subdivision and Wolfe Subdivision; the east three-hundred feet of the north half of Section 35, Township 8 North, Range 10 West, all in Adams County, Nebraska. During the Board’s public meeting on February 4, 2005, the Board approved SAA 329-05-A.

SAA 346-05-A
Norris Public Power District
City of Nebraska City

On February 2, 2005, a joint application was filed by Norris PPD and the City of Nebraska City for an amendment to retail Service Area Agreement 346. The application was designated “SAA 346-05-A”. The purpose of the amendment was to include the following language: “Either party has the right to demand the transfer of any customer located in its own service area that is served by the other party, if such party agrees to pay the other party the statutory compensation for the transfer of such customer and any facilities included in the transfer.” During the Board’s public meeting on March 11, 2005, the SAA 346-05-A was approved.

SAA 193-05-A
Seward County Rural Public Power District
City of Seward

On February 28, 2005 the City of Seward and Seward County Rural Public Power District filed a joint application requesting approval of an amendment to retail Service Area Agreement 193. The application was designated “SAA 193-05-A.” The boundary of the service area would be changed due to the annexation of land generally located to the east of the corporate limits of the city. This land is currently served by Seward County Rural Public Power District. This amendment was approved during the Board’s public meeting held on March 11, 2005.

SAA 308-05-A

SAA 309-05-A
(consolidated)
Roosevelt Public Power District
Nebraska Public Power District

On September 8, 2005, Roosevelt PPD and NPPD filed a joint application to amend and clarify the service area agreement boundaries established in retail Service Area Agreements 308 and 309. The application was designated “SAA 308-05-A and 309-05-A (consolidated)”. The applications involved the same two power suppliers, therefore the amendments were consolidated, but two separate agreements were involved. The applications were to clarify the boundaries between Roosevelt PPD and NPPD. Retail Service Area Agreement 309 was the written agreement between NPPD and the Gering Valley Public Power District. However, Gering Valley Public Power District was acquired by Roosevelt PPD on February 21, 1969. Therefore it is an agreement between NPPD and Roosevelt PPD now. Service Area Agreement 308 is between NPPD and Roosevelt PPD. The purpose of SAA 308-05-A and SAA 309-05-A (consolidated) was to alleviate any uncertainties in the boundary between the power suppliers. During its public meeting on September 23, 2005, the Board voted to approve application SAA 308-05-A and SAA 309-05-A.

SAA 255-05-A
Nebraska Public Power District (NPPD)
City of Gering, Nebraska

On September 8, 2005, NPPD and the City of Gering filed a joint application to amend and clarify the service area agreement boundary established in retail Service Area Agreement 255. The application was designated “SAA 255-05-A”. The purpose of SAA 255-05-A was to clarify and establish the border between NPPD and the City of Gering along the eastern and southern edge of the City of Gering’s territory. The boundary between NPPD and the City of Gering along the north was not changing. The need for this modification came about when NPPD transferred a portion of their service area to the City of Scottsbluff. During the Board’s public meeting held September 23, 2005, the Board voted to approve application SAA 255-05-A.

SAA 228-05-A
Nebraska Public Power District
Chimney Rock Public Power District

On September 8, 2005, NPPD and the Chimney Rock PPD filed a joint application to amend and clarify the service area agreement boundary established in retail Service Area Agreement 228. The application was designated “SAA 228-05-A”. The application was to alleviate uncertainty surrounding the portion of boundary located in Township 21 North, Range 54 West, in Scottsbluff County, Nebraska. The Board approved SAA 228-05-A at its public meeting on September 23, 2005.

SAA 73-05-A
Roosevelt Public Power District
City of Gering, Nebraska

On June 6, 2005, Roosevelt PPD and the City of Gering, Nebraska, filed a joint application to amend and clarify the service area agreement boundary. This was necessary to clarify some uncertainty surrounding the location of the boundaries established in retail Service Area Agreement 73. The application was designated “SAA 73-05-A”. The application was approved the Board at its public meeting held September 23, 2005.

SAA 70-05-A
SAA 71-05-A
(consolidated)
Roosevelt Public Power District
Chimney Rock Public Power District

On June 6, 2005, a joint application was filed by the Roosevelt PPD and the Chimney Rock PPD to amend and clarify the service area agreement boundaries established in retail Service Area Agreements 70 and 71. Retail Service Area Agreement 70 is the written agreement between Chimney Rock PPD and Roosevelt PPD. Retail Service Area Agreement 71 is the written agreement between the Chimney Rock PPD and the Gering Valley PPD. Gering Valley PPD was acquired by the Roosevelt PPD as part of a merger between the two districts on February 21, 1969. Both Gering Valley PPD and Roosevelt PPD had separate service area agreements with Chimney Rock PPD. The two service area agreements still remain, however the amendments were consolidated. The application could not be approved until determining the service area rights to what was approximately the northwest 1/8 of section 32, Township 23 North, Range 54 West in Scottsbluff County, Nebraska. At the public meeting February 24, 2006, the Board voted to approve the application SAA 70-05-A and 71-05-A (consolidated).

SAA 411-06-A
Nebraska Public Power District
Northeast Nebraska Public Power District

On March 28, 2006, a joint application was filed by NPPD and the Northeast Nebraska PPD to amend retail Service Area Agreement 411. The application was designated “SAA 411-06-A”. The application would transfer the service area including and in the immediate vicinity of the Village of Hoskins from NPPD to Northeast Nebraska PPD. Written notice was provided to the Village of Hoskin on March 29, 2006. No written Protest or Complaints were filed with the Board. During the public meeting on April 21, 2006, the Board approved the application to amend S.A.A. 411.

SAA 317-06-A
Nebraska Public Power District
Cedar-Knox Public Power District

On March 17, 2006, a joint application was filed by NPPD and the Cedar-Knox PPD to amend retail Service Area Agreement 317. The application was designated “SAA 317-06-A”. The application would transfer the service area including and in the immediate vicinity of the City of Crofton from NPPD to Cedar-Knox PPD. Written notice was provided to the City of Crofton on March 21, 2006. There were no written Protests or Complaints filed with the Board. During its public meeting on April 21, 2006, the Board voted to approve application SAA 317-06-A.

SAA 51-06-A
City of Grand Island, Nebraska
Southern Public Power District

On May 5, 2006, the City of Grand Island and the Southern PPD filed a joint application to amend retail Service Area Agreement 51. The application was designated “SAA 51-06-A”. The application would transfer a relatively small tract of land located in the northeast quarter of Section 36, Township 11 North, Range 10 West, Hall County, Nebraska, along the southwest edge of the City from Southern PPD to the City. The territory involved had been annexed by the City, but was served by Southern PPD. During its public meeting held May 19, 2006, the Board voted to approve application SAA 51-06-A.

WHOLESALE SERVICE AREA AGREEMENT MODIFICATIONS

The Power Review Board did not have applications to amend wholesale service area agreements during this biennial period.

**AMENDMENTS TO PUBLIC POWER
DISTRICT CHARTERS**

Central Nebraska Public Power & Irrigation District Charter Amendment 5

On May 12, 2004, CNPP&ID filed a petition to amend its charter. The petition would amend sections 3 and 7 of the charter. Section 3 of the charter describes the boundary of each subdivision. Section 7 of the charter establishes the number of directors on the district's board and their names. Public notice was published in two legal newspapers of general circulation in the district, the *Omaha World-Herald* and the *Holdrege Daily Citizen*. At its public meeting held June 17, 2004, the Board decided not to hold a hearing on the proposed charter amendment if no protests, complaints, or objections were filed with the Board, as allowed under Neb. Rev. Stat. § 70-663. The Board did not receive any protests, interventions, or objections. At its public meeting held July 16, 2004, the Board voted to approve CNPP&ID's Charter Amendment 5.

Municipal Energy Agency of Nebraska Charter Amendment 23

On July 22, 2004, MEAN filed a petition to amend its charter. The purpose of this charter amendment was to delete unnecessary provisions in the charter and update the language. Written notice was provided to the Western Area Power Administration, the Tri-State Generation and Transmission Association, Inc., and NPPD, as they were entities that may be interested in the amendments. Public notice was published in the *Omaha World Herald* newspaper on Monday August 2, 2004. At its public meeting held in August 26, 2004, the Board decided not to hold a hearing on the proposed charter amendment if no protests, complaints, or objections were filed with the Board, as allowed under Neb. Rev. Stat. § 70-663. The Board did not receive any protests, interventions, or objections. MEAN's petition for charter amendment 23 was approved at the Board's public meeting held August 26, 2004.

Chimney Rock Public Power District Charter Amendment 7

On December 27, 2004, Chimney Rock PPD filed a petition to amend its charter. The amendment would change section 6 of the charter. This would update the number of directors that are seated on Chimney Rock PPD's board, update the director names, and correct some grammatical errors. Public notice was published in the *Bridgeport News-Blade* and Scottsbluff's *Star Herald*. The Board received one objection from a customer of Chimney Rock PPD. The customer submitted written testimony to the Board prior to the hearing. The customer stated that he was concerned that having six directors instead of 7 would cause tie votes. He explained in his testimony that he had experienced this type of a situation on previous boards. The Board held a hearing on March 11, 2005 in which this written testimony was placed into evidence. After the hearing the Board convened for its regularly scheduled public meeting. The Board voted to approve Charter Amendment 7.

**Loup Valleys Rural Public Power District
Charter Amendment 1**

On May 19, 2005, Loup Valleys RPPD filed a petition to amend its charter. The charter needed to reflect the boundary realignments with NPPD that took place in 1999. Some cities and villages were incorporated into Loup Valleys RPPD's service area during the realignment, but the current charter did not include these cities and villages. This amendment was also needed to update the charter language to include all of the service area changes that have occurred since the district's original charter was approved. Public notice of the charter changes was published in two legal newspapers of general circulation in the district, the *Ord Quiz* and the *Sherman County Times*, on June 8, 15, and 22, 2005. At its public meeting held June 24, 2005, the Board decided not to hold a hearing on the proposed charter amendment if no protests, complaints, or objections were filed with the Board, as allowed under Neb. Rev. Stat. § 70-663. The Board did not receive any protests, interventions, or objections. At its public meeting on July 22, 2005, the Board approved Loup Valleys RPPD's Petition for Charter Amendment 1.

**Norris Public Power District
Charter Amendment 13**

On June 1, 2005, Norris filed a petition to amend sections 2 and 6 of its charter. Section 2 sets out the district's chartered territory, while section 6 divides the territory into voting subdivisions. The reason for the amendment is to restate the names of some voting precincts that have changed and to redistribute the population among the district's twelve voting precincts. Public notice was published in the *Lincoln Journal Star* and the *Beatrice Daily Sun* newspapers. At its public meeting held July 22, 2005, the Board decided not to hold a hearing on the proposed charter amendment if no protests, complaints, or objections were filed with the Board, as allowed under Neb. Rev. Stat. § 70-663. No protests, interventions, or objections were received to the proposed changes. During the Board's public meeting held August 19, 2005, the Board approved Norris's Petition for Charter Amendment 13.

**Municipal Energy Agency of Nebraska
Charter Amendment 24**

On July 19, 2005, MEAN filed a petition to amend its charter by adding the City of Bridgeport, Nebraska as a voting member of MEAN. Written notice was provided to the Western Area Power Administration, Tri-State Generation and Transmission Association, Inc., and NPPD. Public notice was published in the *Omaha World Herald* newspaper on August 25, 2005. At its public meeting held August 19, 2005, the Board decided not to hold a hearing on the proposed charter amendment if no protests, complaints, or objections were filed with the Board, as allowed under Neb. Rev. Stat. § 70-663. The Board received no protests, interventions, or objections. The petition for charter amendment 24 was approved at the Board's public meeting held September 23, 2005.

**Municipal Energy Agency of Nebraska
Charter Amendment 25**

On January 3, 2006, MEAN filed a petition to amend its charter by adding the town of Basin, Wyoming as a voting member of MEAN. Written notice was provided to the Western Area Power Administration, Tri-State Generation and Transmission Association, Inc. and NPPD. Notice was

published in two legal newspapers, the *Omaha World Herald* and the *Torrington Telegram*. At its public meeting held January 13, 2006, the Board decided not to hold a hearing on the proposed charter amendment if no protests, complaints, or objections were filed with the Board, as allowed under Neb. Rev. Stat. § 70-663. The Board received no protests, interventions, or objections. Therefore, the Board voted not to hold a hearing. At its public meeting held January 13, 2006, the Board approved MEAN'S Petition for Charter Amendment 25.

Municipal Energy Agency of Nebraska Charter Amendment 26

On February 7, 2006, MEAN filed a petition to amend its charter by adding the City of Torrington, Wyoming as a voting member of MEAN. Written notice was provided to the Western Area Power Administration, Tri-State Generation and Transmission Association, Inc. and NPPD. Notice was published in two legal newspapers, the *Omaha World Herald* and the *Torrington Telegram* on February 10, 2006. At its public meeting held February 24, 2006, the Board decided not to hold a hearing on the proposed charter amendment if no protests, complaints, or objections were filed with the Board, as allowed under Neb. Rev. Stat. § 70-663. The Board received no protests, interventions, or objections. Therefore, the Board voted not to hold a hearing. At its public meeting held February 24, 2006, the Board approved MEAN'S Petition for Charter Amendment 26.

Cedar-Knox Public Power District Charter Amendment 6

On April 10, 2006, the Cedar-Knox Public Power District filed a petition requesting approval of an amendment to Sections "b" and "f" of the district's charter. Section b establishes the district's chartered territory, while section f divides the chartered territory into three voting subdivisions. The primary purpose of the amendment is to incorporate the City of Crofton into the district's charter. The amendment would also redistribute the district's population among the three voting subdivisions for equal representation purposes, since Crofton adds enough voters to one district to create an imbalance. The petition was also needed to correct several inconsistencies in the charter language. Notice was published in two legal newspapers of general circulation in the district, the *Cedar County News* and the *Wausau Gazette*. At its public meeting held April 21, 2006, the Board decided not to hold a hearing on the proposed charter amendment if no protests, complaints, or objections were filed with the Board, as allowed under Neb. Rev. Stat. § 70-663. There were no protests, complaints, or objections filed with the Board. At its public meeting held May 19, 2006, the Board approved the district's Petition for Charter Amendment 6.

COMPLAINTS

The Power Review Board did not have complaints during this biennial period.

**ROSTER OF POWER SUPPLIERS
OPERATING IN
THE STATE OF NEBRASKA**

	Gross Income Calendar Year 2004	Assessment Fiscal Year 2004-2005	Gross Income Calendar Year 2005	Assessment Fiscal Year 2005- 2006
Wholesale Power Suppliers				
Central Nebraska Public Power & Irrigation District	\$ 5,059,790.87	\$ 528.76	\$ 5,195,266.22	\$ 587.13
*Loup River Public Power District	\$ 63,087,243.00	\$ 6,592.79	\$ 63,353,863.00	\$ 7,159.73
Municipal Energy Agency of Nebraska	\$ 32,015,562.00	\$ 3,345.71	\$ 32,673,738.00	\$ 3,692.52
NE Electric G & T Cooperative, Inc.	\$ 126,161,297.27	\$ 13,184.20	\$123,410,854.55	\$ 13,946.87
*Nebraska Public Power District	\$ 658,863,000.00	\$ 68,853.00	\$643,738,000.00	\$ 72,749.93
*Omaha Public Power District	\$ 588,540,784.51	\$ 61,504.14	\$566,315,100.01	\$ 64,000.24
Tri-State G & T Association, Inc.	\$ 43,205,141.00	\$ 4,515.06	\$ 41,883,945.00	\$ 4,733.38

*Indicates Wholesale and Retail Power Suppliers

Public Power Districts and Cooperatives

Burt County Public Power District	\$ 6,473,326.00	\$ 676.48	\$ 6,328,956.00	\$ 715.25
Butler County Rural Public Power District	\$ 7,383,637.00	\$ 771.61	\$ 7,222,826.00	\$ 816.26
Cedar-Knox Public Power District	\$ 9,226,912.00	\$ 964.24	\$ 9,104,687.00	\$ 1,028.94
Cherry-Todd Electric Cooperative, Inc.	\$ 1,247,348.71	\$ 130.35	\$ 1,282,640.48	\$ 144.95
Chimney Rock Public Power District	\$ 3,835,601.00	\$ 400.83	\$ 3,969,190.00	\$ 448.56
Cornhusker Public Power District	\$ 16,645,214.00	\$ 1,739.47	\$ 16,755,351.00	\$ 1,893.55
Cuming County Public Power District	\$ 6,778,159.97	\$ 708.34	\$ 6,511,828.41	\$ 735.91
Custer Public Power District	\$ 11,545,693.00	\$ 1,206.56	\$ 12,630,514.00	\$ 1,427.40
Public Power Districts and Cooperatives	Gross IncomeCalendar Year 2004	Assessment Fiscal Year 2004-2005	Gross Income Calendar Year 2005	Assessment Fiscal Year 2005-2006
Dawson County Public Power District	\$ 26,723,602.00	\$ 2,792.69	\$ 26,996,524.00	\$ 3,050.92

Elkhorn Rural Public Power District	\$ 12,696,048.00	\$ 1,326.77	\$ 12,628,279.00	\$ 1,427.14
Highline Electric Association	\$ 7,189,054.94	\$ 751.28	\$ 6,518,801.48	\$ 736.70
High West Energy, Inc.	\$ 6,295,151.00	\$ 657.86	\$ 6,539,391.00	\$ 739.03
Howard Greeley Rural Public Power District	\$ 6,350,865.00	\$ 663.68	\$ 6,328,639.00	\$ 715.21
Imperial Public Power District	\$ 1,295,866.00	\$ 135.42	\$ 1,301,557.00	\$ 147.09
K.B.R. Rural Public Power District	\$ 4,874,159.00	\$ 509.36	\$ 4,966,269.00	\$ 561.25
LaCreek Electric Association, Inc.	\$ 359,816.08	\$ 37.60	\$ 363,063.78	\$ 41.03
Loup Valley Rural Public Power District	\$ 4,740,135.00	\$ 495.36	\$ 4,915,964.00	\$ 555.56
McCook Public Power District	\$ 11,270,659.00	\$ 1,177.81	\$ 10,967,234.00	\$ 1,239.43
Midwest Electric Cooperative, Inc.	\$ 15,558,228.05	\$ 1,625.88	\$ 14,123,064.00	\$ 1,596.07
Niobrara Electric Association, Inc.	\$ 749,447.00	\$ 78.32	\$ 756,800.00	\$ 85.53
Niobrara Valley Electric Membership Corporation	\$ 7,338,901.00	\$ 766.94	\$ 7,411,228.00	\$ 837.56
Norris Public Power District	\$ 34,464,580.00	\$ 3,601.64	\$ 34,820,070.00	\$ 3,601.64
North Central Public Power District	\$ 5,973,249.93	\$ 624.22	\$ 6,116,364.36	\$ 691.22
Northeast Nebraska Rural Public Power District	\$ 12,435,488.00	\$ 1,299.54	\$ 12,309,912.00	\$ 1,391.16
Northwest Rural Public Power District	\$ 5,715,609.00	\$ 597.30	\$ 6,444,963.00	\$ 728.36
Public Power Districts and Cooperatives	Gross Income Calendar Year 2004	Assessment Fiscal Year 2004-2005	Gross Income Calendar Year 2005	Assessment Fiscal Year 2005-2006
Panhandle Rural Electric Membership Association	\$ 7,829,675.00	\$ 818.22	\$ 8,435,950.00	\$ 953.36
Perennial Public Power District	\$ 13,456,983.00	\$ 1,406.29	\$ 12,919,086.00	\$ 1,460.01

Polk County Rural Public Power District	\$ 7,005,612.00	\$ 732.11	\$ 7,016,619.00	\$ 792.96
Rolling Hills Electric Cooperative, Inc.	\$ 8,919.06	\$ 0.93	\$ 12,048.93	\$ 1.36
Roosevelt Public Power District	\$ 3,685,446.00	\$ 385.14	\$ 3,713,862.66	\$ 419.71
Seward County Rural Public Power District	\$ 6,312,240.00	\$ 659.65	\$ 6,487,199.00	\$ 733.13
South Central Public Power District	\$ 9,541,758.00	\$ 997.14	\$ 9,573,394.00	\$ 1,081.91
Southern Public Power District	\$ 45,985,274.00	\$ 4,805.59	\$ 46,299,750.00	\$ 5,232.41
Southwest Public Power District	\$ 11,523,774.96	\$ 1,204.27	\$ 11,368,789.00	\$ 1,284.81
Stanton County Public Power District	\$ 3,847,070.00	\$ 402.03	\$ 3,882,622.00	\$ 438.78
Twin Valleys Public Power District	\$ 7,409,125.00	\$ 774.27	\$ 7,550,882.09	\$ 853.34
Wheatbelt Public Power District	\$ 10,700,707.00	\$ 1,118.25	\$ 10,617,730.00	\$ 1,199.93
Wyrulec Company	\$ 1,395,611.35	\$ 145.85	\$ 1,381,834.14	\$ 156.16
Y-W Electric Association, Inc.	\$ 467,687.70	\$ 48.87	\$ 516,930.16	\$ 58.42

<u>Municipal Power Suppliers - Generation & Distribution</u>	Gross Income Calendar Year 2004	Assessment Fiscal Year 2004-2005	Gross Income Calendar Year 2005	Assessment Fiscal Year 2005-2006
Alliance, City of	\$ 7,341,362.00	\$ 767.19	\$ 6,715,037.00	\$ 758.88
Ansley, Village of	\$ 324,607.12	\$ 33.92	\$ 328,256.17	\$ 37.10
Arnold, Village of	\$ 447,603.21	\$ 46.78	\$ 442,520.16	\$ 50.01
Auburn, City of	\$ 3,750,580.00	\$ 391.95	\$ 3,864,615.00	\$ 436.75
Beaver City, City of	\$ 426,448.79	\$ 44.57	\$ 409,049.42	\$ 46.23
Benkelman, City of	\$ 739,607.25	\$ 77.29	\$ 723,529.16	\$ 81.77

Blue Hill, City of	\$ 455,324.13	\$ 47.58	\$ 457,846.52	\$ 51.74
Broken Bow, City of	\$ 3,161,516.64	\$ 330.39	\$ 3,257,443.74	\$ 368.13
Burwell, City of	\$ 818,804.86	\$ 85.57	\$ 811,415.90	\$ 91.70
Callaway, Village of	\$ 409,487.62	\$ 42.79	\$ 406,898.11	\$ 45.98
Cambridge, City of	\$ 859,728.45	\$ 89.84	\$ 838,622.41	\$ 94.77
Campbell, Village of	\$ 250,412.14	\$ 26.17	\$ 243,255.95	\$ 27.49
Chappell, City of	\$ 531,179.76	\$ 55.51	\$ 508,313.13	\$ 57.45
Crete, City of	\$ 5,585,382.28	\$ 583.69	\$ 5,766,360.48	\$ 651.67
Curtis, City of	\$ 985,000.00	\$ 102.94	\$ 1,027,000.00	\$ 116.06
David City, City of	\$ 2,616,262.27	\$ 273.41	\$ 2,684,919.18	\$ 303.43
Deshler, City of	\$ 510,481.00	\$ 53.35	\$ 521,674.00	\$ 58.96
Emerson, City of	\$ 433,275.40	\$ 45.28	\$ 437,297.76	\$ 49.42
Fairbury, City of	\$ 4,530,609.00	\$ 473.46	\$ 4,553,597.00	\$ 514.61
Falls City, City of	\$ 2,970,961.00	\$ 310.47	\$ 2,927,457.22	\$ 330.84
Franklin, City of	\$ 856,509.81	\$ 89.51	\$ 844,737.46	\$ 95.47
Fremont, City of	\$ 21,504,495.59	\$ 2,247.28	\$ 22,895,608.00	\$ 2,587.47
Grand Island, City of	\$ 33,725,790.00	\$ 3,524.44	\$ 31,796,408.00	\$ 3,593.37
<u>Municipal Power Suppliers - Generation & Distribution</u>	Gross Income Calendar Year 2004	Assessment Fiscal Year 2004-2005	Gross Income Calendar Year 2005	Assessment Fiscal Year 2005-2006
Hastings	\$ 23,054,272.00	\$ 2,409.24	\$ 23,318,242.00	\$ 2,635.23
Holdrege, City of	\$ 5,977,660.00	\$ 624.68	\$ 5,912,422.00	\$ 668.17
Imperial, City of	\$ 1,767,770.60	\$ 184.74	\$ 1,758,093.00	\$ 198.69
Kimball, City of	\$ 1,819,039.28	\$ 190.09	\$ 1,839,084.13	\$ 207.84
Laurel, City of	\$ 546,849.05	\$ 57.15	\$ 594,932.24	\$ 67.23
Lincoln, City of	\$ 168,867,870.00	\$ 17,647.16	\$ 168,487,000.00	\$ 19,041.00
Lodgepole, Village of	\$ 203,468.43	\$ 21.26	\$ 234,121.93	\$ 26.46
Lyons, City of	\$ 574,407.00	\$ 60.03	\$ 601,301.30	\$ 67.95
Madison, City of	\$ 3,271,377.68	\$ 341.87	\$ 3,039,164.39	\$ 343.46
Minden, City of	\$ 2,175,148.68	\$ 227.31	\$ 2,091,129.07	\$ 236.32

Mullen, City of	\$ 319,073.12	\$ 33.34	\$ 340,311.50	\$ 38.46
Nebraska City, City of	\$ 9,724,707.55	\$ 1,016.26	\$ 9,767,651.69	\$ 1,103.86
Neligh, City of	\$ 1,378,618.03	\$ 144.07	\$ 1,359,783.13	\$ 153.67
Ord, City of	\$ 1,854,235.67	\$ 193.77	\$ 1,726,408.29	\$ 195.10
Oxford, Village of	\$ 589,924.00	\$ 61.65	\$ 636,754.00	\$ 71.96
Pender, Village of	\$ 686,763.25	\$ 71.77	\$ 678,321.00	\$ 76.66
Plainview, City of	\$ 892,797.77	\$ 93.30	\$ 924,985.00	\$ 104.53
Randolph, City of	\$ 602,184.00	\$ 62.93	\$ 596,845.56	\$ 67.45
Red Cloud, City of	\$ 770,624.00	\$ 80.53	\$ 782,180.89	\$ 88.40
Sargent, City of	\$ 477,513.08	\$ 49.90	\$ 456,527.76	\$ 51.59
Schuyler, City of	\$ 6,062,482.00	\$ 633.55	\$ 6,074,961.00	\$ 686.54
Sidney, City of	\$ 4,610,927.00	\$ 481.85	\$ 4,694,764.00	\$ 530.56
Spalding, Village of	\$ 387,460.31	\$ 40.49	\$ 433,846.84	\$ 49.03
Stratton, Village of	\$ 315,093.65	\$ 32.93	\$ 309,927.30	\$ 35.03
Stuart, Village of	\$ 483,856.00	\$ 49.15	\$ 524,572.00	\$ 71.46
Tecumseh, City of	\$ 1,558,724.81	\$ 162.89	\$ 1,727,039.61	\$ 195.18

<u>Municipal Power Suppliers - Generation & Distribution</u>	Gross Income Calendar Year 2004	Assessment Fiscal Year 2004-2005	Gross Income Calendar Year 2005	Assessment Fiscal Year 2005-2006
--	--	---	--	---

Trenton, Village of	\$ 404,442.13	\$ 42.27	\$ 405,717.35	\$ 45.85
Wahoo, City of	\$ 3,243,348.88	\$ 338.94	\$ 3,098,436.12	\$ 350.16
Wakefield, City of	\$ 1,755,773.85	\$ 183.48	\$ 1,914,848.92	\$ 216.40
Wauneta, Village of	\$ 478,433.00	\$ 50.00	\$ 472,929.00	\$ 53.45
Wayne, City of	\$ 3,935,413.38	\$ 411.26	\$ 3,937,855.49	\$ 445.02
West Point, City of	\$ 2,762,379.33	\$ 288.68	\$ 2,794,493.64	\$ 315.81
Wilber, City of	\$ 997,256.38	\$ 104.22	\$ 1,104,403.66	\$ 124.81

Municipal Power Supplier - Distribution Only

Arapahoe, City of	\$ 923,395.82	\$ 96.50	\$ 900,682.83	\$ 101.79
-------------------	---------------	----------	---------------	-----------

Bartley, Village of	\$ 207,241.03	\$ 21.66	\$ 212,038.33	\$ 23.96
Battle Creek, City of	\$ 725,994.00	\$ 75.87	\$ 740,468.00	\$ 83.68
Bayard, City of	\$ 634,951.00	\$ 66.35	\$ 723,443.91	\$ 81.76
Beatrice, City of	\$ 10,409,284.00	\$ 1,087.80	\$ 10,110,437.00	\$ 1,142.60
Bradshaw, Village of	\$ 182,000.00	\$ 19.02	\$ 172,000.00	\$ 19.44
Brainard, Village of	\$ 148,316.44	\$ 15.50	\$ 201,158.97	\$ 22.73
Bridgeport, City of	\$ 848,901.77	\$ 88.71	\$ 923,365.23	\$ 104.35
Central City, City of	\$ 2,549,686.53	\$ 266.45	\$ 2,552,879.89	\$ 288.51
Chester, Village of	\$ 222,818.63	\$ 23.29	\$ 224,317.39	\$ 25.35
Clarkson, City of	\$ 469,370.03	\$ 49.05	\$ 497,391.62	\$ 56.21
Cozad, City of	\$ 4,240,666.00	\$ 443.16	\$ 4,243,699.00	\$ 479.59
Dakota City, City of	\$ 96,166.20	\$ 10.05	\$ 94,194.77	\$ 10.65
Davenport, Village of	\$ 234,528.41	\$ 24.51	\$ 220,504.91	\$ 24.92

<u>Municipal Power Suppliers - Distribution Only</u>	Gross Income Calendar Year 2004	Assessment Fiscal Year 2004-2005	Gross Income Calendar Year 2005	Assessment Fiscal Year 2005-2006
---	--	---	--	---

Decatur, Village of	\$ 384,054.28	\$ 40.13	\$ 383,588.97	\$ 43.35
DeWitt, Village of	\$ 1,201,059.00	\$ 125.51	\$ 1,250,680.00	\$ 141.34
Dorchester, Village of	\$ 399,573.59	\$ 41.76	\$ 389,817.44	\$ 44.05
Edgar, City of	\$ 453,131.91	\$ 47.35	\$ 485,563.83	\$ 54.87
Elk Creek, Village of	\$ 66,110.69	\$ 6.91	\$ 64,880.33	\$ 7.33
Endicott, Village of	\$ 54,673.53	\$ 5.71	\$ 56,124.23	\$ 6.34
Fairmont, Village of	\$ 350,402.00	\$ 36.62	\$ 366,826.00	\$ 41.46
Friend, City of	\$ 744,651.74	\$ 77.82	\$ 742,852.94	\$ 83.95
Gering, City of	\$ 4,385,628.00	\$ 458.31	\$ 4,613,605.00	\$ 521.39
Gilead, Village of	\$ 23,397.00	\$ 2.45	\$ 23,639.00	\$ 2.67
Giltner, Village of	\$ 326,237.00	\$ 34.09	\$ 320,013.82	\$ 36.17
Gothenburg, City of	\$ 3,024,554.64	\$ 316.07	\$ 3,087,868.63	\$ 348.97
Grant, City of	\$ 1,002,395.00	\$ 104.75	\$ 1,071,027.97	\$ 121.04

Greenwood, Village of	\$ 268,486.40	\$ 28.06	\$ 287,253.04	\$ 32.46
Hampton, Village of	\$ 253,577.06	\$ 26.50	\$ 302,143.86	\$ 34.15
Hebron, City of	\$ 1,458,046.57	\$ 152.37	\$ 1,416,962.48	\$ 160.13
Hemingford, Village of	\$ 582,062.96	\$ 60.83	\$ 568,044.25	\$ 64.20
Hickman, City of	\$ 540,036.46	\$ 56.44	\$ 549,011.54	\$ 62.04
Hildreth, Village of	\$ 238,531.03	\$ 24.93	\$ 193,928.89	\$ 21.92
Holbrook, Village of	\$ 160,105.58	\$ 16.73	\$ 147,198.00	\$ 16.64
Hubbell, Village of	\$ 63,733.90	\$ 6.66	\$ 93,993.81	\$ 10.62
Indianola, City of	\$ 386,743.82	\$ 40.42	\$ 378,032.99	\$ 42.72
Leigh, Village of	\$ 346,749.03	\$ 36.24	\$ 348,890.40	\$ 39.43
Lexington, City of	\$ 7,822,587.28	\$ 817.48	\$ 7,841,830.26	\$ 886.22

<u>Municipal Power Suppliers - Distribution Only</u>	Gross Income Calendar Year 2004	Assessment Fiscal Year 2004-2005	Gross Income Calendar Year 2005	Assessment Fiscal Year 2005-2006
--	--	---	--	---

Lyman, Village of	\$ 391,930.45	\$ 40.96	\$ 444,793.90	\$ 50.27
Mitchell, City of	\$ 795,276.50	\$ 83.11	\$ 849,843.01	\$ 96.04
Morrill, Village of	\$ 1,076,155.85	\$ 112.46	\$ 1,119,273.24	\$ 126.49
Nelson, City of	\$ 352,033.95	\$ 36.79	\$ 339,904.68	\$ 38.41
North Platte, City of	\$ 16,616,303.95	\$ 1,736.45	\$ 16,601,279.00	\$ 1,876.14
Pierce, City of	\$ 1,214,082.72	\$ 126.87	\$ 1,257,497.24	\$ 142.11
Polk , Village of	\$ 282,750.25	\$ 29.55	\$ 270,502.65	\$ 30.57
Prague, Village of	\$ 184,466.43	\$ 19.28	\$ 181,532.47	\$ 20.52
Reynolds, Village of	\$ 51,025.25	\$ 5.33	\$ 54,267.87	\$ 6.13
St. Paul, City of	\$ 1,506,629.00	\$ 157.45	\$ 1,552,856.00	\$ 175.49
Scribner, City of	\$ 826,233.91	\$ 86.34	\$ 776,612.59	\$ 87.77
Seward, City of	\$ 4,156,549.91	\$ 434.37	\$ 4,403,809.92	\$ 497.68
Shickley, Village of	\$ 250,641.80	\$ 26.19	\$ 254,397.30	\$ 28.75
Snyder, Village of	\$ 460,325.00	\$ 48.11	\$ 467,920.00	\$ 52.88

South Sioux City, City of	\$ 10,769,987.94	\$ 1,125.49	\$ 10,363,790.13	\$ 1,171.23
Spencer, Village of	\$ 379,841.00	\$ 39.69	\$ 368,949.00	\$ 41.70
Stromsburg, City of	\$ 769,398.95	\$ 80.40	\$ 733,925.85	\$ 82.94
Superior, City of	\$ 1,910,031.53	\$ 199.60	\$ 1,517,782.00	\$ 171.53
Sutton, City of	\$ 960,027.15	\$ 100.33	\$ 1,063,430.00	\$ 120.18
Syracuse, City of	\$ 1,108,021.24	\$ 115.79	\$ 1,271,653.09	\$ 143.71
Talmage, Village of	\$ 137,255.56	\$ 14.34	\$ 126,102.37	\$ 14.25
Valentine, City of	\$ 2,550,807.40	\$ 266.57	\$ 2,526,515.00	\$ 285.53
Walthill, Village of	\$ 361,976.76	\$ 37.83	\$ 351,939.85	\$ 39.77

<u>Municipal Power Suppliers - Distribution Only</u>	Gross Income Calendar Year 2004	Assessment Fiscal Year 2004-2005	Gross Income Calendar Year 2005	Assessment Fiscal Year 2005-2006
Weston, Village of	\$ 148,995.00	\$ 15.57	\$ 152,945.05	\$ 17.28
Wilcox, Village of	\$ 319,564.05	\$ 33.40	\$ 336,250.29	\$ 38.00
Winside, Village of	\$ 205,893.20	\$ 21.52	\$ 207,154.40	\$ 23.41
Wisner, City of	\$ 932,909.00	\$ 97.49	\$ 942,698.69	\$ 106.54
Wood River, City of	\$ 828,580.27	\$ 86.59	\$ 1,142,653.87	\$ 129.13
Wymore, City of	\$ 839,443.35	\$ 87.72	\$ 838,548.33	\$ 94.77

POWER SUPPLIERS BY CATEGORY

Supplier	<u>Fiscal Year 2003-2004</u>		<u>Fiscal Year 2004-2005</u>	
	Number of Suppliers	Gross Income	Number of Suppliers	Gross Income
Wholesale	5	1,270,468,197.67	5	1,347,566,380.38
Generation and Transmission Associations	2	163,281,749.26	2	169,366,438.27
Public Power Districts	39	349,510,086.52	39	356,336,633.75
Municipal-Generation and Distribution	56	335,816,969.22	56	345,785,322.23
Municipal-Distribution Only	67	90,769,196.76	67	96,816,985.70
INDUSTRY TOTAL	169	2,209,846,199.43	169	2,315,871,760.33

Supplier	<u>Fiscal Year 2005-2006</u>		<u>Fiscal Year 2006-2007</u>	
	Number of Suppliers	Gross Income	Number of Suppliers	Gross Income
Wholesale	5	1,311,275,967.23	5	1,469,302,298.06
Generation and Transmission Associations	2	165,294,799.55	2	176,795,483.40
Public Power Districts	39	357,090,813.49	39	377,006,078.89
Municipal-Generation and Distribution	56	345,100,915.58	56	382,043,164.52
Municipal-Distribution Only	67	97,319,187.32	67	104,045,781.24
INDUSTRY TOTAL	169	2,276,081,683.17	169	2,509,192,806.11

**NEBRASKA POWER ASSOCIATION
LOAD AND CAPABILITY REPORT**



June 23, 2006

Mr. Tim Texel
Executive Director and General Counsel
Nebraska Power Review Board
301 Centennial Mall South
State Office Building 5th floor
PO Box 94713
Lincoln, NE 68509-4713



SUBJECT: Nebraska Power Association Load and Capability Report

Dear Tim:

As required by State Statute (70-1025), attached is the Nebraska Power Association (NPA) annual load and capability report. Per the statute, the report includes the sum of Nebraska's utilities peak demand forecasts and resources over a 20-year period (2006 through 2025).

The current combined statewide forecast of non-coincident peak demand is derived by summing the demand forecasts for each individual utility. Each utility supplied a peak demand forecast and a load and capability table based on the loads having a 50/50 probability of being higher or lower. Over the twenty-year period of 2006 through 2025, the average annual compounded peak demand growth rate for the State is projected at 1.60% per year. This is slightly lower than last year's 1.73% for the period 2005 through 2024.

In addition to the load requirements of our customers, the state utilities must also maintain a 15% reserve margin above their peak demand forecast ("Minimum Obligation"). This is a requirement of the Mid-Continent Area Power Pool (MAPP). All MAPP Generation Reserve Sharing Pool (GRSP) members must maintain this in order to assist each other in the case of emergencies such as unit outages. By having a reserve sharing pool, instead of individual utilities carrying their own reserves to protect them from the loss of their largest unit on their system, the reserve requirement for all members of the pool is reduced. A 15% reserve margin is adequate in a pool, but individually it would be much higher. This reserve capacity amounts to significant resource capability over and above the Nebraska load requirement, 802 MW in 2006 and 1,131 MW by 2025.

Many of the Nebraska power systems maintain an additional planning reserve margin over and above the minimum required 15% ("Planned Obligation"). The amount of planning reserves considered to be adequate varies because of utility differences in size, age, condition and fuel supply of generation resources; population density; abnormal weather, customer demand characteristics; available demand response programs; electric transmission adequacy; unexpected unit retirements due to equipment failure, and system stability among other factors. In total, these additional planning reserves add 243 to 294 MW, or 3.5 to 3.9 percent, from 2006 through 2025 for Nebraska utilities. This additional risk-based planning criteria in combination with the minimum requirements, establishes a typical planning reserve guideline range of 15 to 20 percent. This range reflects common expectations within the electric utility industry.

The State has an "Existing" in-service generating resource capability of 7,056 MW. This includes OPPD's Elk City Units 5&6 (1.5 MW) which will be placed in-service prior to the summer peak of 2006.

There are four units that are classified as "Committed" (units that have Nebraska Power Review Board (NPRB) approval). Committed resources total 1,037 MW and include 1.5 MW of Elk City Units 7&8 (landfill gas), 152 MW of Council Bluffs Unit #4, 663 MW of Nebraska City #2, and 220 MW of Whelan Energy Center #2. The Committed resources include 125 MW sold to out-of-state participants in Nebraska City #2 and 80 MW sold to out-of-state participants in Whelan Energy Center #2. This results in 832 MW of Committed resources to be utilized by Nebraska utilities.

Exhibit 1 is the load and capability chart based on existing and committed resources and Exhibit 2 is the corresponding load and capability table. The lower "Minimum Obligation" line is the statewide obligation based on the 50/50 forecast (normal weather) and the minimum 15% reserve requirements of the MAPP GRSP. The higher obligation line is the combined "Planned Obligation" that the combined Nebraska power systems use. Based on the existing and committed resources, the statewide deficit occurs in 2022 for the Minimum Obligation and 2019 for the Planned Obligation. This assumes that NPPD receives approval from the NRC to extend the Cooper Nuclear Station operating license beyond 2013. The statewide deficit has been delayed by 1 to 2 years as compared to the 2005 Report because of slightly lower load growth forecast.

There are no units that are classified as "Planned" (units that utilities have authorized expenditures for an architect/engineer, or permitting, but do not have NPRB approval).

Resources identified as "Studied" for this report were not based on the traditional method but in a unique way specifically for this statewide plan. For years beyond the point when existing, committed, and planned resources would meet a utility's Planned Obligation, each utility would establish Studied resources in a quantity to meet this deficit gap. These Studied resources are

Mr. Tim Texel
June 23, 2006
Page 3

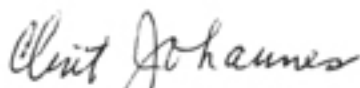
divided based on the optimum split between base, intermediate, and peaking types considering current and future needs. The result is a listing for each utility of the ideal mix of baseload, intermediate and peaking resources for each year following their deficit. The summation of Studied resources will provide the basis for the NPRB and the state utilities to understand the forecasted future need by year and by resource type. This can be used as a joint planning document and a tool for a coordinated long range power supply.

Exhibit 3 shows the statewide load and capability chart considering 7,056 MW of Existing, 1,037 MW of Committed, 0 MW of Planned, and 970 MW of Studied resources. Exhibit 4 is the corresponding load and capability table. These exhibits show that the State is not projected to have a deficit for the twenty-year study period with Existing, Committed, Planned, and Studied resources.

The 970 MW of Studied resources include 445 MW of baseload capacity, 77 MW of intermediate capacity, and 448 MW of peaking capacity by 2025. The Committed, Planned, and Studied resources are listed in Exhibit 5. Nebraska's Existing resources are listed in Exhibit 6.

I plan to be at the NPRB meeting on July 21, 2006 to present this information and to address any questions. We also anticipate that committee members from other NPA utilities will be present to address any utility-specific questions. If prior to that meeting you have any questions regarding the data, please feel free to call David Ried of Omaha Public Power District (402-514-1025), who accumulated the load and capability this year.

Sincerely,



Clint Johannes, Chairman
Joint Planning Subcommittee of NPA

Enclosure

c: NPA Joint Planning Subcommittee
NPA Board

EXHIBIT 1

Statewide Capability vs. Obligation

Committed Resources

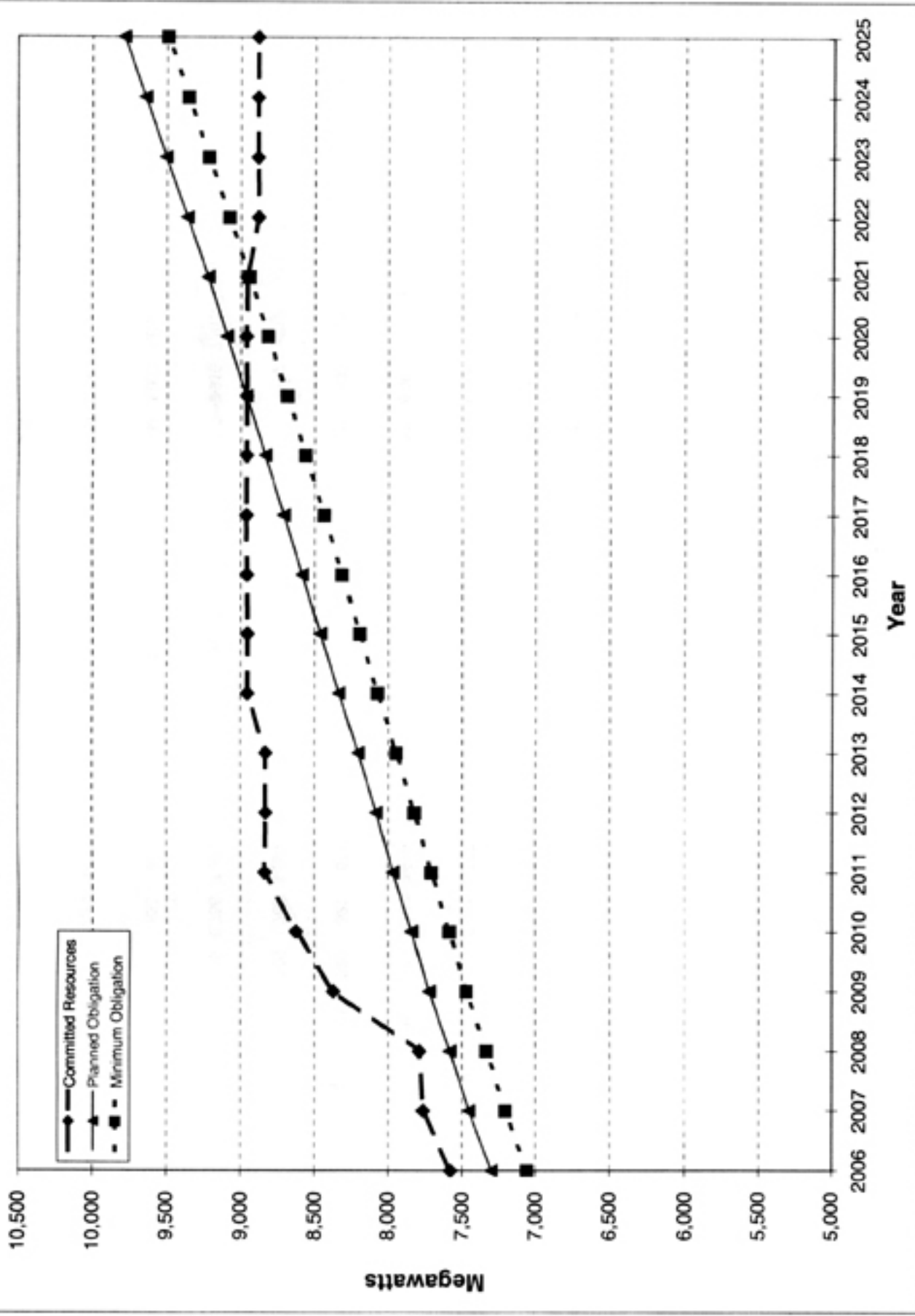


EXHIBIT 2
NEBRASKA STATEWIDE
Committed Load & Generating Capability in Megawatts
Summer Conditions (May 1 to October 31)

Year	2006	2007	2008	2009	2010	2011	2012	2013	2014	2015	2016	2017	2018	2019	2020	2021	2022	2023	2024
1 Seasonal System Demand	6,256	6,383	6,495	6,612	6,711	6,818	6,917	7,023	7,132	7,240	7,343	7,449	7,555	7,666	7,777	7,886	8,002	8,123	8,241
2 Annual System Demand	6,256	6,383	6,495	6,612	6,711	6,818	6,917	7,023	7,132	7,240	7,343	7,449	7,555	7,666	7,777	7,886	8,002	8,123	8,241
3 Firm Purchases - Total	1,077	1,075	1,080	1,083	1,085	1,082	1,082	1,083	1,085	1,089	1,091	1,093	1,094	1,095	1,097	1,091	1,091	1,091	1,092
4 Firm Sales - Total	47	47	47	47	46	46	46	46	47	47	47	47	47	47	47	47	47	47	47
5 Seasonal Adjusted Net Demand (1-3+4)	5,226	5,354	5,461	5,577	5,672	5,782	5,880	5,986	6,093	6,198	6,300	6,403	6,508	6,618	6,727	6,842	6,959	7,079	7,196
6 Annual Adjusted Net Demand (2-3+4)	5,226	5,354	5,461	5,577	5,672	5,782	5,880	5,986	6,093	6,198	6,300	6,403	6,508	6,618	6,727	6,842	6,959	7,079	7,196
7 Net Generating Capability (owned)	7,056	7,180	7,200	7,913	7,913	8,109	8,098	8,098	8,098	8,096	8,095	8,095	8,095	8,092	8,092	8,014	8,014	8,014	8,014
8 Participation Purchase -Total	319	320	321	519	520	576	576	577	528	530	530	531	532	533	534	535	536	537	538
9 Participation Sales -Total	825	765	765	1,097	847	882	882	882	712	712	712	712	712	712	712	712	712	712	712
10 Adjusted Net Capability (7+8-9)	6,550	6,735	6,756	7,336	7,587	7,803	7,793	7,794	7,915	7,914	7,914	7,915	7,916	7,913	7,915	7,915	7,839	7,840	7,840
11 Net Reserve Capacity Obligation (6 x 0.15)	802	822	838	857	872	888	904	921	937	954	970	986	1,003	1,020	1,037	1,055	1,074	1,093	1,111
12 Total Firm Capacity Obligation (5+11)	6,028	6,176	6,299	6,434	6,544	6,670	6,784	6,907	7,030	7,152	7,270	7,389	7,511	7,638	7,764	7,897	8,033	8,172	8,307
13 Surplus or Deficit (-) Capacity @ Minimum Obligation (10-12)	522	559	457	902	1,043	1,133	1,009	887	885	762	644	526	405	275	151	18	-194	-332	-467
14 Surplus or Deficit (-) Capacity @ Planned Obligation	279	312	207	650	787	876	751	624	620	495	373	253	129	-4	-130	-265	-480	-620	-759

EXHIBIT 3 Statewide Capability vs. Obligation Committed, Planned & Studied Resources

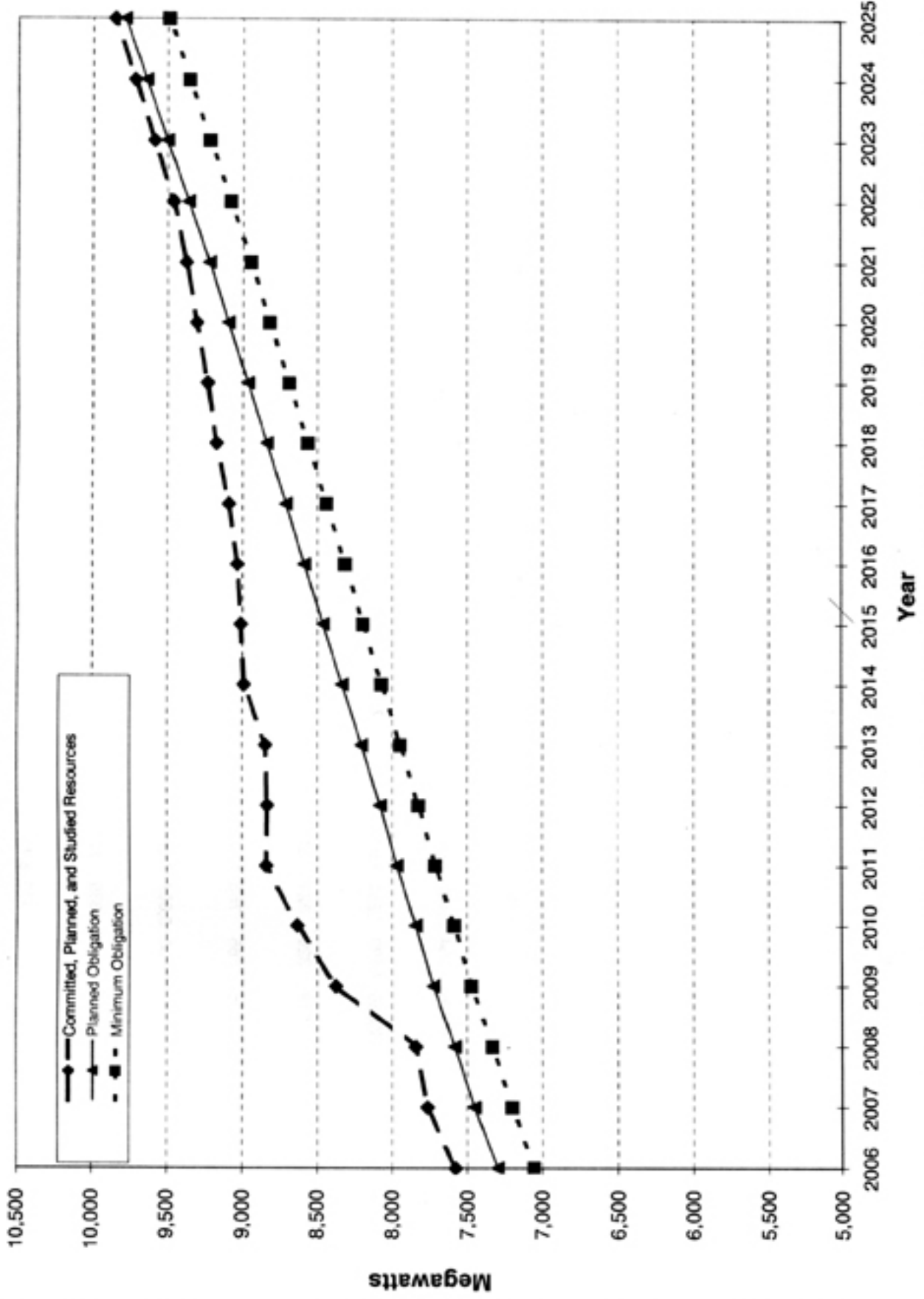


EXHIBIT 4

NEBRASKA STATEWIDE

Committed, Planned & Studied Load & Generating Capability in Megawatts

Summer Conditions (May 1 to October 31)

Year	2006	2007	2008	2009	2010	2011	2012	2013	2014	2015	2016	2017	2018	2019	2020	2021	2022	2023	2024	2025	
1 Seasonal System Demand	6,256	6,383	6,495	6,612	6,711	6,818	6,917	7,023	7,132	7,240	7,343	7,449	7,555	7,666	7,777	7,886	8,002	8,123	8,241	8,362	
2 Annual System Demand	6,256	6,383	6,495	6,612	6,711	6,818	6,917	7,023	7,132	7,240	7,343	7,449	7,555	7,666	7,777	7,886	8,002	8,123	8,241	8,362	
3 Firm Purchases - Total	1,077	1,075	1,080	1,083	1,085	1,082	1,082	1,083	1,086	1,089	1,091	1,093	1,094	1,095	1,097	1,091	1,091	1,091	1,091	1,092	1,092
4 Firm Sales - Total	47	47	47	47	46	46	46	46	47	47	47	47	47	47	47	47	47	47	47	47	47
5 Seasonal Adjusted Net Demand (1-3+4)	5,226	5,354	5,461	5,577	5,672	5,782	5,880	5,986	6,093	6,198	6,300	6,403	6,508	6,618	6,727	6,842	6,959	7,079	7,196	7,317	
6 Annual Adjusted Net Demand (2-3+4)	5,226	5,354	5,461	5,577	5,672	5,782	5,880	5,986	6,093	6,198	6,300	6,403	6,508	6,618	6,727	6,842	6,959	7,079	7,196	7,317	
7 Net Generating Capability (owned)	7,056	7,180	7,251	7,913	7,915	8,109	8,098	8,110	8,132	8,151	8,171	8,225	8,308	8,366	8,435	8,511	8,594	8,720	8,849	8,984	
8 Participation Purchase -Total	319	320	321	519	520	576	576	577	528	530	530	531	532	533	534	535	536	537	538	538	
9 Participation Sales -Total	825	765	765	1,097	847	882	882	882	712	712	712	712	712	712	712	712	712	712	712	712	712
10 Adjusted Net Capability (7+8-9)	6,550	6,735	6,807	7,336	7,589	7,803	7,793	7,806	7,949	7,969	7,990	8,045	8,128	8,187	8,257	8,335	8,418	8,545	8,675	8,810	
11 Net Reserve Capacity Obligation (6 x 0.15)	802	822	839	856	872	889	904	921	937	954	970	986	1,003	1,020	1,037	1,056	1,074	1,093	1,111	1,130	
12 Total Firm Capacity Obligation (5+11)	6,028	6,176	6,300	6,433	6,544	6,671	6,785	6,907	7,030	7,152	7,269	7,390	7,511	7,638	7,764	7,898	8,032	8,171	8,308	8,448	
13 Surplus or Deficit (-) Capacity @ Minimum Obligation (10-12)	522	559	507	903	1,045	1,132	1,009	899	919	817	721	655	616	549	493	437	386	374	368	362	
14 Surplus or Deficit (-) Capacity @ Planned Obligation	279	312	257	650	789	875	750	637	654	550	450	383	340	270	212	154	100	85	76	69	

EXHIBIT 5 Committed, Planned and Studied Capability Data

Utility	Unit Name	New Existing	Committed	Planned	Studied	Unit Type	Fuel Type	Accrued Capacity	2006	2007	2008	2009	2010	2011	2012	2013	2014	2015	2016	2017	2018	2019	2020	2021	2022	2023	2024	2025	
Falls City	Falls City							0.0	0	0	0	0	0	0	0	0	0	0	0	0	0	0	0	0	0	0	0	0	
	Total							0.0	0	0	0	0	0	0	0	0	0	0	0	0	0	0	0	0	0	0	0		
	Fremont							20.0	0	0	0	0	0	0	0	0	0	0	0	0	0	20	20	20	20	20	20	20	
Total								20.0	0	0	0	0	0	0	0	0	0	0	0	0	20	20	20	20	20	20	20	20	
Grand Island	Grand Island							0.0	0	0	0	0	0	0	0	0	0	0	0	0	0	0	0	0	0	0	0	0	
	Total							0.0	0	0	0	0	0	0	0	0	0	0	0	0	0	0	0	0	0	0	0	0	
	WEC #2							220.0	0	0	0	0	220	220	220	220	220	220	220	220	220	220	220	220	220	220	220	220	
Total								220.0	0	0	0	220	220	220	220	220	220	220	220	220	220	220	220	220	220	220	220	220	
Hastings	Hastings							249.0	0	0	0	0	2	0	0	0	0	0	0	0	0	0	1	5	10	14	19	24	29
	Total							249.0	0	0	0	0	2	0	0	0	0	0	0	0	0	220	220	220	220	220	220	220	220
	Council Bluffs #4							100.0	0	50	100	100	100	100	100	100	100	100	100	100	100	100	100	100	100	100	100	100	100
Total								371.6	0	50	100	100	100	100	100	100	100	100	100	100	100	100	100	100	100	100	100	100	100
MEAN	MEAN							52.0	0	52	52	52	52	52	52	52	52	52	52	52	52	52	52	52	52	52	52	52	
	Total							25.0	0	0	0	0	0	0	0	0	0	0	0	0	0	5	10	15	20	25	30	35	
	Future Peak							77.0	0	52	52	52	52	52	52	52	52	52	52	52	52	52	52	52	52	52	52	52	52
Nebraska City	Nebraska City							0.0	0	0	0	0	0	0	0	0	0	0	0	0	0	0	0	0	0	0	0	0	
	Total							0.0	0	0	0	0	0	0	0	0	0	0	0	0	0	0	0	0	0	0	0	0	
	Future Peak							242.8	0	51	0	0	0	0	0	0	0	0	0	0	0	0	0	0	0	89	140	191	243
Total							242.8	0	51	0	0	0	0	0	0	0	0	0	0	0	0	0	0	0	89	140	191	243	
OPPO	Nebraska City #2							663.0	0	0	663	663	663	663	663	663	663	663	663	663	663	663	663	663	663	663	663	663	663
	Landfill Gas							1.5	2	2	2	2	2	2	2	2	2	2	2	2	2	2	2	2	2	2	2	2	2
	Landfill Gas							1.5	0	2	2	2	2	2	2	2	2	2	2	2	2	2	2	2	2	2	2	2	2
	Future Peak							114.6	0	0	0	0	0	0	0	0	0	0	0	0	0	34	73	115	0	0	0	32	81
	Future Base							300.0	0	0	0	0	0	0	0	0	0	0	0	0	0	0	0	154	197	241	287	300	300
	Total							1047.4	2	3	666	666	666	666	666	666	666	666	666	666	666	700	739	820	863	907	953	998	1047
Nebraska Grand Total							2007.8	2	105	156	818	820	1038	1038	1050	1072	1093	1114	1168	1250	1312	1381	1458	1618	1743	1873	2008		
Fuel type	H-Hydro							2	2	2	2	2	2	2	2	2	2	2	2	2	2	2	2	2	2	2	2	2	
	D-Diesel							0	0	0	0	0	0	0	0	0	0	0	0	0	0	0	0	0	0	0	0	0	
	N-Nuclear							0	0	0	0	0	0	0	0	0	0	0	0	0	0	0	0	0	0	0	0	0	
	CT-Combustion Turbine							0	0	0	0	0	0	0	0	0	0	0	0	0	0	0	0	0	0	0	0	0	
	CC-Combined Cycle							0	0	51	0	2	0	0	0	0	0	0	0	0	0	34	87	149	59	87	199	254	343
	C-Pulverized Coal							0	0	0	0	0	0	0	0	0	0	0	0	0	0	0	0	0	0	0	5	29	52
R-Renewable							0	0	0	0	0	0	0	0	0	0	0	0	0	0	0	0	0	0	0	0	0	0	
L-Landfill Gas							2	105	156	818	820	1038	1038	1050	1072	1093	1114	1168	1250	1312	1381	1458	1618	1743	1873	2008			

**EXHIBIT 6
Existing Generating Capability Data**

Utility	Unit Name	Duty Cycle	Unit Type	Fuel Type	Commercial Operation Date	2006 Summer Accredited Capacity	2006 Summer Utility Capacity
Falls City	Falls City #1	P	D	O	1930	0.70	
	Falls City #2	P	D	O	1937	1.00	
	Falls City #3	P	D	NG/O	1965	2.30	
	Falls City #4	P	D	NG/O	1946	0.80	
	Falls City #5	P	D	NG/O	1951	1.40	
	Falls City #6	P	D	NG/O	1958	2.00	
	Falls City #7	P	D	NG/O	1972	6.20	
	Falls City #8	P	D	NG/O	1981	6.00	
Falls City	Total					<u>6.00</u>	20.4
Fremont	Fremont #6	B	F	C/NG	1958	17.50	
	Fremont #7	B	F	C/NG	1963	22.40	
	Fremont #8	B	F	C/NG	1977	84.40	
	CT		CT	NG/O	2003	36.00	
Fremont	Total					<u>36.00</u>	160.3
Grand Island	Burdick #1	P	F	NG/O	1957	16.00	
	Burdick #2	P	F	NG/O	1963	22.00	
	Burdick #3	P	F	NG/O	1972	54.00	
	Burdick GT1	P	CT	NG/O	1968	13.00	
	Burdick GT2	P	CT	NG/O	2003	34.00	
	Burdick GT3	P	CT	NG/O	2003	34.00	
	Platte Generating Station	B	F	C	1982	100.00	
Grand Island	Total					<u>100.00</u>	273.0
Hastings	Whelan Energy Center #1	B	F	C	1981	77.00	
	Hastings-NDS#4	P	F	NG/O	1957	13.00	
	Hastings-NDS#5	P	F	NG/O	1967	24.00	
	DHPC-#1	P	CT	NG/O	1972	18.00	
Hastings	Total					<u>18.00</u>	132.0
LES	Laramie	B	F	C	1982	188.00	
	J St	P	CT	NG/O	1972	27.20	
	Rokeby 1	P	CT	NG/O	1982	63.10	
	Rokeby 2	P	CT	NG/O	1997	86.80	
	Rokeby 3	P	CT	NG/O	2001	95.90	
	Wind Turbines #1-2	I	R	W	1999	0.00	
	Rokeby Black Start	P	D	O	1997	3.10	
	Salt Valley	P	CC	NG/O	2003	122.60	
	Salt Valley	P	CT	NG/O	2003	47.30	
	Salt Valley Black Start	P	D	O	2004	1.60	
LES	Total					<u>1.60</u>	635.6
MEAN	Ansley #1	P	D	NG/O	1972	0.40	
	Ansley #2	P	D	NG/O	1968	0.80	1.2
	Arnold #1	P	D	NG/O	1960	0.40	
	Arnold #2	P	D	NG/O	1942	0.20	
	Arnold #3	P	D	NG/O	1946	0.30	0.9
	Beaver City #1	P	D	NG/O	1958	0.40	
	Beaver City #2	P	D	NG/O	1961	0.30	
	Beaver City #4	P	D	NG/O	1968	0.45	1.2
	Benkelman #1	P	D	NG/O	1968	0.75	0.8
	Blue Hill#1	P	D	NG/O	1964	0.80	
	Blue Hill#2	P	D	O	1948	0.40	1.2
	Broken Bow #1	P	D	O	1933	0.50	
	Broken Bow #2	P	D	NG/O	1971	3.20	
	Broken Bow #3	P	D	NG/O	1936	0.80	
	Broken Bow #4	P	D	NG/O	1949	0.80	
	Broken Bow #5	P	D	NG/O	1959	1.00	
	Broken Bow #6	P	D	NG/O	1961	2.00	8.3
	Burwell#1	P	D	NG/O	1955	0.50	
	Burwell#2	P	D	NG/O	1962	0.70	
	Burwell#3	P	D	NG/O	1967	0.90	
	Burwell#4	P	D	NG/O	1972	0.90	3.0
	Callaway #1	P	D	O	1936	0.18	
	Callaway #2	P	D	O	1948	0.18	
	Callaway #3	P	D	O	1958	0.50	0.9
	Chappell #2	P	D	O	1945	0.30	
	Chappell #3	P	D	O	1982	0.90	1.2
	Crete #1	P	D	NG/O	1939	0.50	
	Crete #2	P	D	NG/O	1955	1.10	
	Crete #3	P	D	NG/O	1951	0.90	
	Crete #4	P	D	NG/O	1947	0.90	
	Crete #5	P	D	NG/O	1962	2.70	
	Crete #6	P	D	NG/O	1965	3.50	

**EXHIBIT 6
Existing Generating Capability Data**

Utility	Unit Name	Duty Cycle	Unit Type	Fuel Type	Commercial Operation Date	2006 Summer Accredited Capacity	2006 Summer Utility Capacity	
MEAN (cont)	Crete #7	P	D	NG/O	1972	6.07	15.7	
	Curtis #1	P	D	NG/O	1975	1.20		
	Curtis #2	P	D	NG/O	1969	0.90		
	Curtis #3	P	D	NG/O	1955	0.90		
	Fairbury #2	P	F	NG/O	1948	4.30		
	Fairbury #4	P	F	NG/O	1966	11.00		15.3
	Kimball #1	P	D	NG/O	1955	1.00		
	Kimball #2	P	D	NG/O	1956	0.90		
	Kimball #3	P	D	NG/O	1959	1.00		
	Kimball #4	P	D	NG/O	1960	0.90		
	Kimball #5	P	D	NG/O	1951	0.70		
	Kimball #7	P	D	NG/O	1975	3.50		8.0
	Kimball Wind Turbines #1-7	I	R	W	2002	0.00		
	Oxford #1	P	D	O	1948	0.54		
	Oxford #2	P	D	NG/O	1952	0.53		
	Oxford #3	P	D	NG/O	1956	0.76		
	Oxford #4	P	D	NG/O	1956	0.47		
	Oxford #5	P	D	O	1972	1.00		3.3
	Pender #1	P	D	O	1967	1.06		
	Pender #2	P	D	NG/O	1973	1.72		
	Pender #3	P	D	O	1953	0.44		
	Pender #4	P	D	O	1961	0.74		
	Pender #5	P	D	O	1939	0.00		4.0
	Plainview #1	P	D	NG/O	1948	1.10		
	Plainview #3	P	D	NG/O	1957	0.90		
	Plainview #4	P	D	NG/O	1962	1.25		
	Plainview #5	P	D	NG/O	1962	1.83		5.1
	Red Cloud #2	P	D	NG/O	1953	0.50		
	Red Cloud #3	P	D	NG/O	1960	1.00		
	Red Cloud #4	P	D	NG/O	1968	1.00		
	Red Cloud #5	P	D	NG/O	1974	1.50		4.0
	Sargent #1	P	D	NG/O	1963	0.00		
	Sargent #2	P	D	NG/O	1964	0.75		
	Sargent #3	P	D	NG/O	1966	0.25		1.0
	Sidney #1	P	D	NG/O	1967	1.00		
	Sidney #2	P	D	NG/O	1973	2.50		
	Sidney #3	P	D	O	1953	0.65		
	Sidney #4	P	D	NG/O	1961	0.85		
	Sidney #5	P	D	NG/O	1939	2.65		7.7
	Stuart #1	P	D	NG/O	1965	0.75		
	Stuart #2	P	D	NG/O	1996	0.75		
	Stuart #3	P	D	O	1954	0.28		
	Stuart #4	P	D	O	1946	0.28		2.1
	West Point #1	P	D	NG/O	1950	2.05		
	West Point #2	P	D	NG/O	1959	0.95		
	West Point #3	P	D	NG/O	1965	0.59		
	West Point #5	P	D	NG/O	1971	3.81		7.4
	Wisner #1	P	D	NG/O	1954	0.48		
	Wisner #2	P	D	O	1947	0.31		
	Wisner #3	P	D	O	1969	0.66		1.5
	Laramie #1	B	F	C	1982	10.00		10.0
	MEAN	Total						106.4
	Nebraska City	Nebraska City #2 Black start	P	D	NG/O	1953		1.00
		Nebraska City #3	P	D	NG/O	1955		2.00
		Nebraska City #4	P	D	NG/O	1957		2.50
Nebraska City #5 Black start		P	D	NG/O	1964	1.60		
Nebraska City #6		P	D	NG/O	1967	1.50		
Nebraska City #7		P	D	NG/O	1969	1.50		
Nebraska City #8		P	D	NG/O	1970	3.50		
Nebraska City #9		P	D	NG/O	1974	5.60		
Nebraska City #10		P	D	NG/O	1979	5.80		
Nebraska City #11		P	D	NG/O	1998	3.80		
Nebraska City #12		P	D	NG/O	1998	3.80		
Nebraska City #13		P	D	O	1998	4.50		
Nebraska City		Total					37.1	
NPPD	Ainsworth Wind Energy	I	R	W	2005	10.10		
	Auburn #1	P	D	NG/O	1982	2.10		
	Auburn #2	P	D	NG/O	1949	0.50		
	Auburn #4	P	D	NG/O	1993	3.30		
	Auburn #5	P	D	NG/O	1973	3.00		
	Auburn #6	P	D	NG/O	1967	2.20		
	Auburn #7	P	D	NG/O	1987	5.20		
	Beatrice Power Station	I	CC	NG	2005	237.00		

EXHIBIT 6
Existing Generating Capability Data

Utility	Unit Name	Duty Cycle	Unit Type	Fuel Type	Commercial Operation Date	2006 Summer	2006
						Accredited Capacity	Summer Utility Capacity
NPPD (cont)	Belleville 4	P	D	NG/O	1955	0.80	
	Belleville 6	P	D	NG/O	1966	3.10	
	Belleville 7	P	D	NG/O	1971	4.10	
	Belleville 8	P	D	NG/O	2006	2.80	
	Cambridge	P	D	NG	1972	3.00	
	Canaday	P	F	NG/O	1958	117.95	
	Columbus 1	B	H	HR	1936	13.30	
	Columbus 2	B	H	HR	1936	12.50	
	Columbus 3	B	H	HR	1936	13.30	
	Cropper	B	N	UR	1971	260.34	
	David City 1	P	D	NG/O	1960	1.30	
	David City 2	P	D	NG/O	1949	0.80	
	David City 3	P	D	NG/O	1955	0.90	
	David City 4	P	D	NG/O	1966	1.80	
	David City 5	P	D	O	1996	1.33	
	David City 6	P	D	O	1996	1.33	
	David City 7	P	D	O	1996	1.34	
	Deshler 1	P	D	NG/O	2001	0.27	
	Deshler 2	P	D	NG/O	1950	0.29	
	Deshler 3	P	D	NG/O	1998	1.10	
	Deshler 4	P	D	NG/O	1956	0.60	
	Emerson #2	P	D	NG/O	1968	1.15	
	Emerson #3	P	D	NG/O	1948	0.15	
	Emerson #4	P	D	O	1958	0.40	
	Franklin 1	P	D	NG	1963	0.65	
	Franklin 2	P	D	NG	1974	1.35	
	Franklin 3	P	D	NG	1968	1.05	
	Franklin 4	P	D	NG	1955	0.65	
	Gentleman 1	B	F	C	1979	665.00	
	Gentleman 2	B	F	C	1982	700.00	
	Hallam (Black Start)	P	CT	NG/O	1973	52.00	
	Hebron	P	CT	NG/O	1973	51.00	
	Holdrege 1	P	D	O	1938	0.00	
	Holdrege 2	P	D	O	1952	0.00	
	Holdrege 3	P	D	O	1945	0.00	
	Jeffrey 1	B	H	HR	1940	9.00	
	Jeffrey 2	B	H	HR	1940	9.00	
	Johnson I 1	B	H	HR	1940	9.00	
	Johnson I 2	B	H	HR	1940	9.00	
	Johnson II	B	H	HR	1940	18.00	
	Kearney	B	H	HR	1921	1.00	
	Kingsley(Black Start)	B	H	HR	1985	38.00	
	Lodgepole 1	P	D	O	1934	0.00	
	Lodgepole 2	P	D	O	1947	0.00	
	Lyons 2	P	D	O	1953	0.20	
	Lyons 3	P	D	O	1960	0.90	
	Madison 1	P	D	NG/O	1969	1.70	
Madison 2	P	D	NG/O	1959	0.95		
Madison 3	P	D	NG/O	1953	0.85		
Madison 4	P	D	O	1946	0.50		
McCook(Black Start)	P	CT	O	1973	50.00		
Monroe	B	H	HS	1936	2.60		
Mullen #1	P	D	O	1958	0.35		
Mullen #2	P	D	O	1966	0.65		
North Platte 1(Black Start)	B	H	HR	1935	12.00		
North Platte 2(Black Start)	B	H	HR	1935	12.00		
Ord 1	P	D	NG/O	1973	5.00		
Ord 2	P	D	NG/O	1966	1.00		
Ord 3	P	D	NG/O	1963	2.00		
Ord 4	P	D	O	1997	1.40		
Ord 5	P	D	O	1997	1.40		
Sheldon 1	B	F	C	1961	105.00		
Sheldon 2	B	F	C	1965	120.00		
Spalding 2	P	D	O	1955	0.40		
Spalding 3	P	D	O	1975	1.40		
Spalding 4	P	D	O	1999	0.20		
Spalding 5	P	D	O	2001	0.25		
Spencer 1	B	H	HS	1927	0.80		
Spencer 2	B	H	HS	1952	1.00		
Springview #1-2	I	R	W	1998	0.00		
Sutherland 1	P	D	O	1952	0.45		
Sutherland 2	P	D	O	1959	0.85		
Sutherland 3	P	D	O	1935	0.00		
Sutherland 4	P	D	O	1964	1.35		
Wahoo #1	P	D	NG/O	1960	1.70		

**EXHIBIT 6
Existing Generating Capability Data**

Utility	Unit Name	Duty Cycle	Unit Type	Fuel Type	Commercial Operation Date	2006 Summer Accredited Capacity	2006 Summer Utility Capacity
NPPD (cont)	Wahoo #3	P	D	NG/O	1973	3.60	3135.2
	Wahoo #5	P	D	NG/O	1952	1.80	
	Wahoo #6	P	D	NG/O	1969	2.90	
	Wakefield 2	P	D	NG/O	1955	0.54	
	Wakefield 4	P	D	NG/O	1961	0.69	
	Wakefield 5	P	D	NG/O	1966	1.08	
	Wakefield 6	P	D	NG/O	1971	1.13	
	Wayne 1	P	D	O	1951	0.75	
	Wayne 3	P	D	O	1956	1.75	
	Wayne 4	P	D	O	1960	1.85	
	Wayne 5	P	D	O	1966	3.25	
	Wayne 6	P	D	O	1968	4.90	
	Wayne 7	P	D	O	1998	3.25	
	Wayne 8	P	D	O	1998	3.25	
	Wilber 4	P	D	O	1949	0.78	
	Wilber 5	P	D	O	1958	0.59	
	Wilber 6	P	D	O	1997	1.57	
	York 1	P	D	O	1980	1.00	
	York 2	P	D	O	1996	1.60	
	NPPD	Total					
OPPD	Fort Calhoun #1	B	N	UR	1973	483.00	2555.6
	Nebraska City #1	B	F	C	1979	646.00	
	North Omaha #1	B	F	C/NG	1954	78.60	
	North Omaha #2	B	F	C/NG	1957	111.00	
	North Omaha #3	B	F	C/NG	1959	111.00	
	North Omaha #4	B	F	C/NG	1963	138.20	
	North Omaha #5	B	F	C/NG	1968	224.00	
	Jones St. #1	P	CT	O	1973	59.20	
	Jones St. #2	P	CT	O	1973	59.20	
	Cass County #1	P	CT	NG	2003	160.00	
	Cass County #2	P	CT	NG	2003	160.00	
	Sarpy County #1	P	CT	NG/O	1972	55.20	
	Sarpy County #2	P	CT	NG/O	1972	55.20	
	Sarpy County #3	P	CT	NG/O	1996	105.50	
	Sarpy County #4	P	CT	NG/O	2000	47.50	
	Sarpy County #5	P	CT	NG/O	2000	47.50	
	Sarpy Co. Black Start	P	D	O	1996	3.40	
	Elk City Station #1-4	B	D,R	L	2002	3.00	
	Elk City Station #5-6	B	D,R	L	2006	1.50	
	Valley Wind Turbine #1	I	R	W	2001	0.00	
	Tecumseh #1	P	D	O	1949	0.60	
	Tecumseh #2	P	D	O	1968	1.40	
	Tecumseh #3	P	D	O	1952	1.00	
	Tecumseh #4	P	D	O	1960	1.20	
	Tecumseh #5	P	D	O	1993	2.40	
OPPD	Total					<u>2.40</u>	

Nebraska Grand Total

TOTAL 7056

<u>Duty Cycle</u>	<u>Unit Type</u>	<u>Fuel type</u>
B-Base	H-Hydro	HS-Run of River
Intermediate	D-Diesel	NG-Natural Gas
P-Peaking	N-Nuclear	O-Oil
	CT-Comb Turbine	C-Coal
	CC-Comb Cycle	HR- Reservoir
	F-Fossil	UR-Uranium
	R-renewable	L-Landfill Gas
		W-Wind